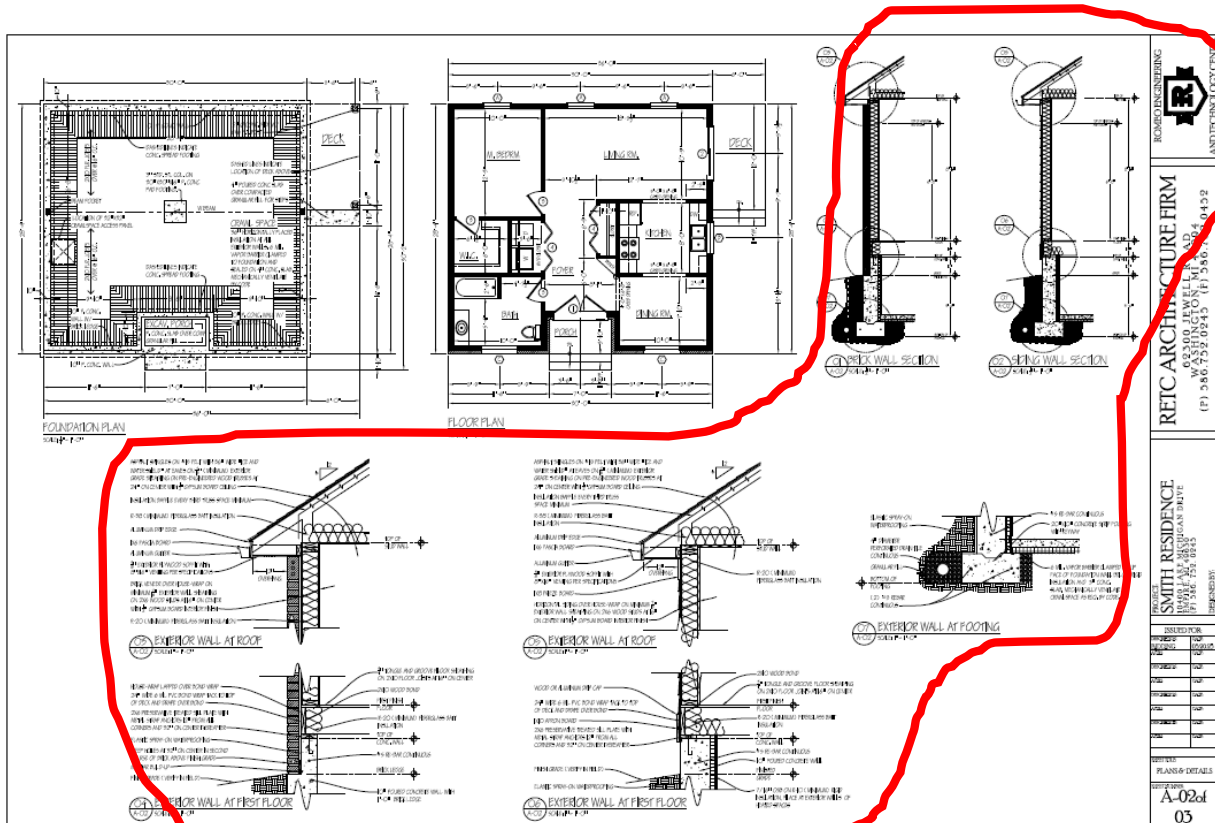


Adding a Wall Section and Construction Details

You are now going to show a **wall section** of your cottage, which explains how the structure is built. You will then show **construction details**, which are highlighted “zoomed-in” portions of the wall section, to clearly note and described.



Steps:

1. Download the reference CAD file, “Adding a Wall Section and Construction Details”.
2. Copy and paste the wall section that coordinates to your cottage. If you designed your cottage with siding, copy the siding wall section. If your house has two different wall types, you may have to copy the two that coordinate.
3. Copy the construction details that have been started for you. You only need to show the ones that coordinate to your cottage. (If you have a full brick cottage only copy the brick ones.)
4. Add notes and finalize the construction details as shown in the example.

Construction Details- Formative Draft Check

Print your construction details from model space on A-size sheets, scaled to fit. You can choose how many on a sheet, but it must be at a size that is easy to read and mark-up

Construction Details- Summative Final Check

Fix red-marks on the draft prints, and re-plot. Turn back in for grade along with old formative draft checks.