

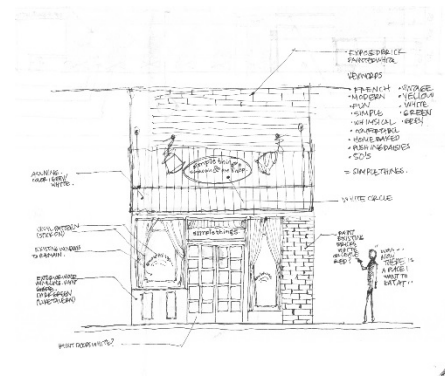
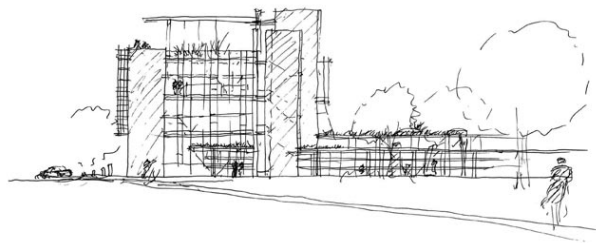
## Schematic Commercial Space Exterior Elevation Sketches

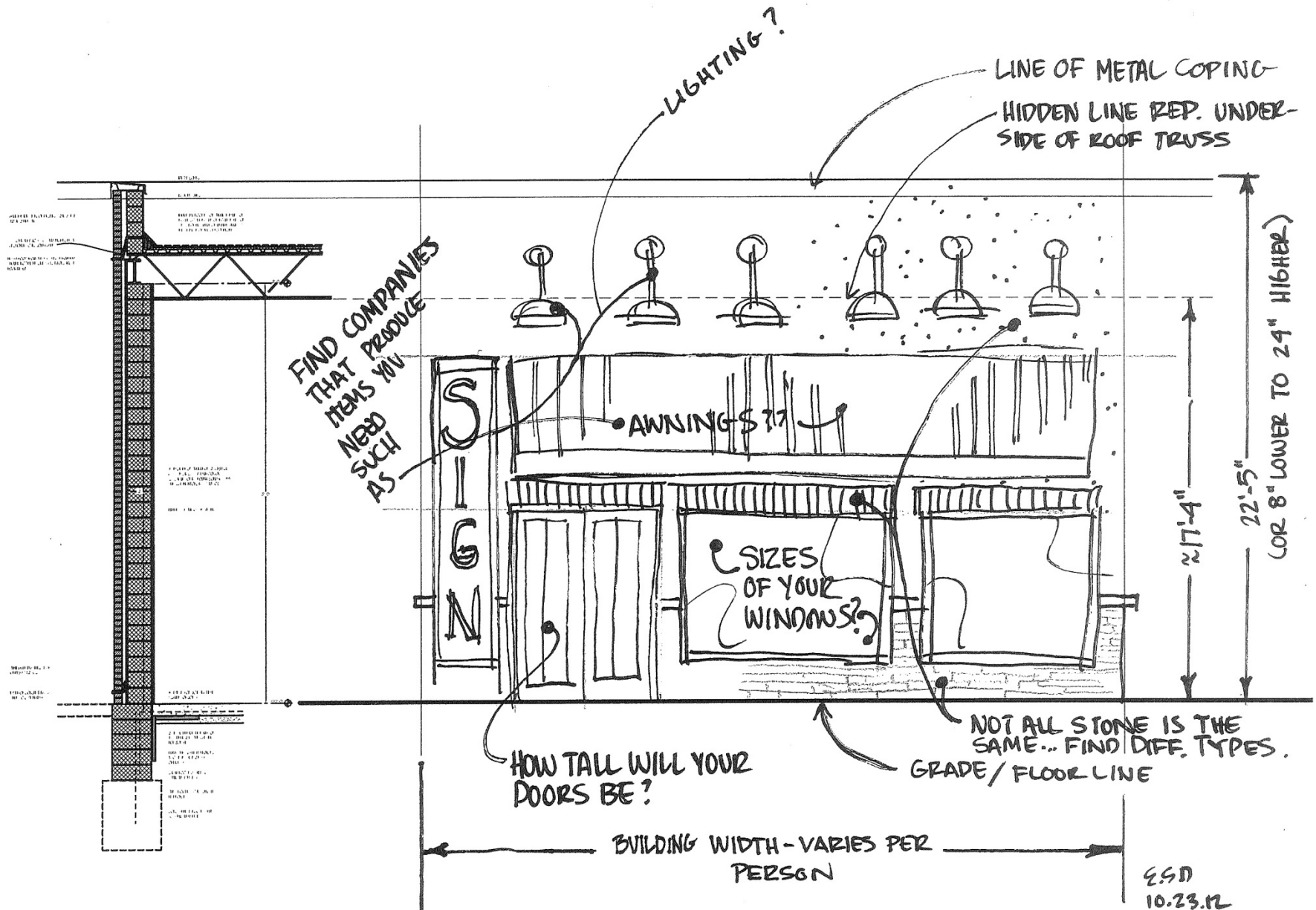
At this stage you will want to start showing what your commercial space could possibly look like on the outside by showing Exterior Elevation Sketches. In the end your elevation may change completely, become a mixture of a few ideas or be designed very closely to what you originally had in mind. Regardless, it is important to start getting the idea out on paper.

Hand sketch a minimum of three exterior elevations for your commercial space. Plan on your elevation to be approximately 30'-0" wide and 23'-0" tall. In each of your sketches show building material, signage, lighting, doors, windows and any other elements you may want to incorporate into your design for your commercial space. Note these items as well. Your elevation should clearly portray the type of commercial space you are designing as well as fit into the overall theme and look of the Mall of Partridge Creek. *(As a side note, if while sketching you come up with an idea for some other part of the building, sketch that too!)*

Do each sketch on a 8.5x11 sheet of paper. Title the sketches, “Elevation Option 1, Elevation Option 2 and Elevation Option 3”. As always be sure to sign your name and date your sketch at the bottom.

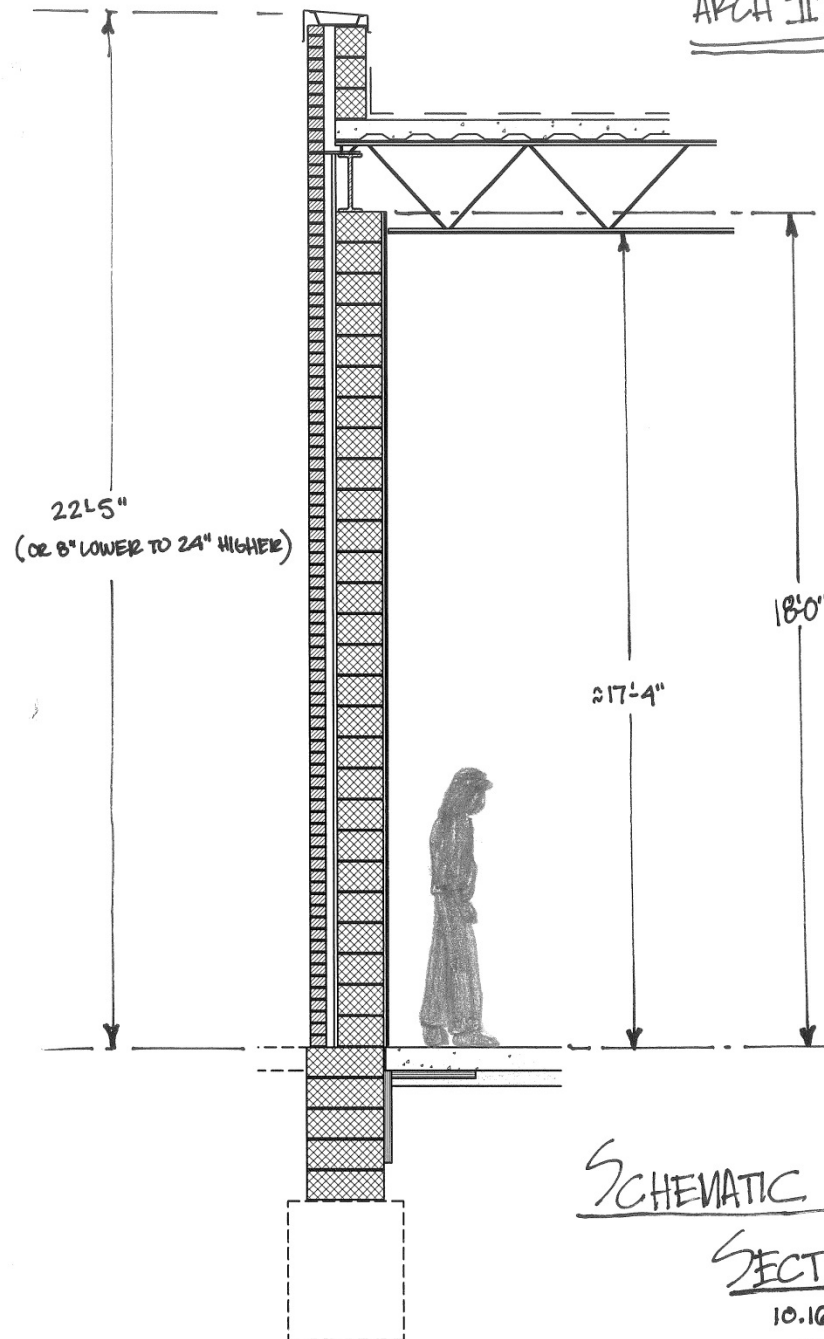
See the following for an example and reference information.





ELEVATION SKETCHES ← YES! PLURAL, MEANING MORE THAN ONE.

ARCH II COMM. SPACE



SCHEMATIC WALL

SECTION

10.16.2012

E.S.D.