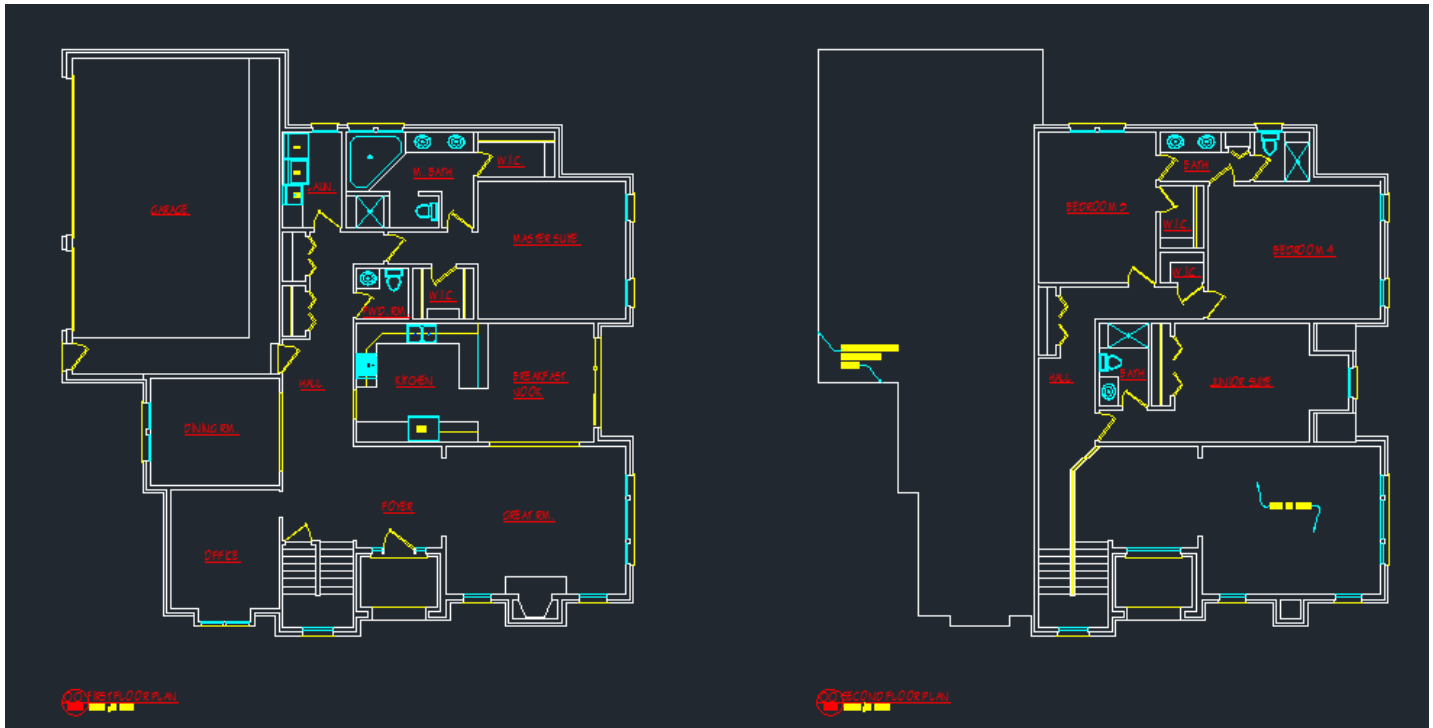


Dream House: Schematic Design Phase

You will now draw your dream house in CAD. You will take it to the schematic design level, meaning only showing walls, (no hatch) windows, doors, and placement of fixtures and counters. It is important to implement good drafting skills, (*items on the correct layers, proper dimensions, one line is really one line*) right from the start to make your overall project coordinate and be free of mistakes later.



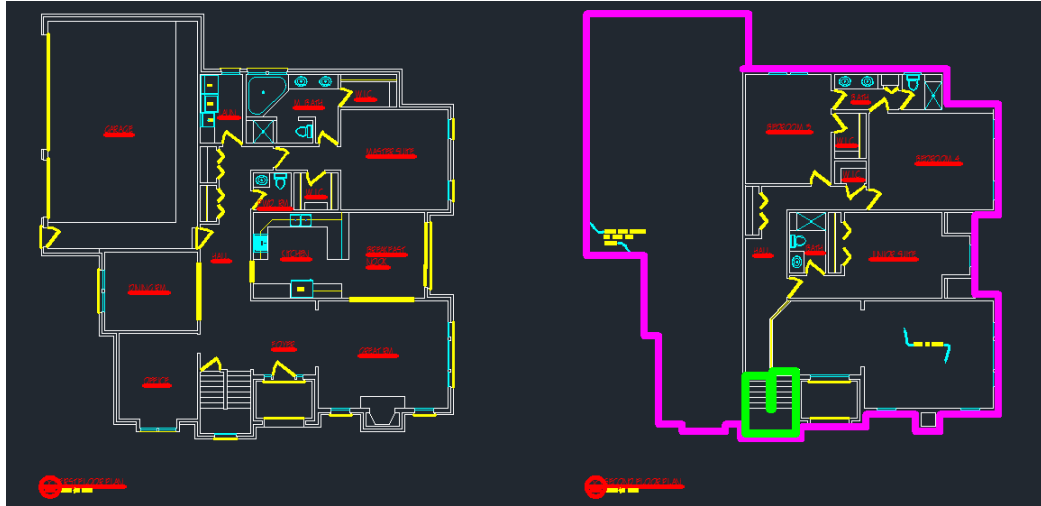
1. Open up the CAD file “Standard Residential CAD Drawing”. Do a SAVE AS and rename it “Standard Residential CAD Drawing” .dwg and save it into your ARCH I folder.
2. Draw walls on the **WALL LAYER**. The following are the dimensions for walls.
 - a. Exterior Brick Walls: 11” (4”Brick on the outside, 7” on the inside)
 - b. Exterior Siding Walls: 7”
 - c. Interior Partition Walls: 4.5”

Type in all dimensions; do not “eyeball” them. All dimensions should be to an inch (9’-7”) or half inch (9’-7 ½”).

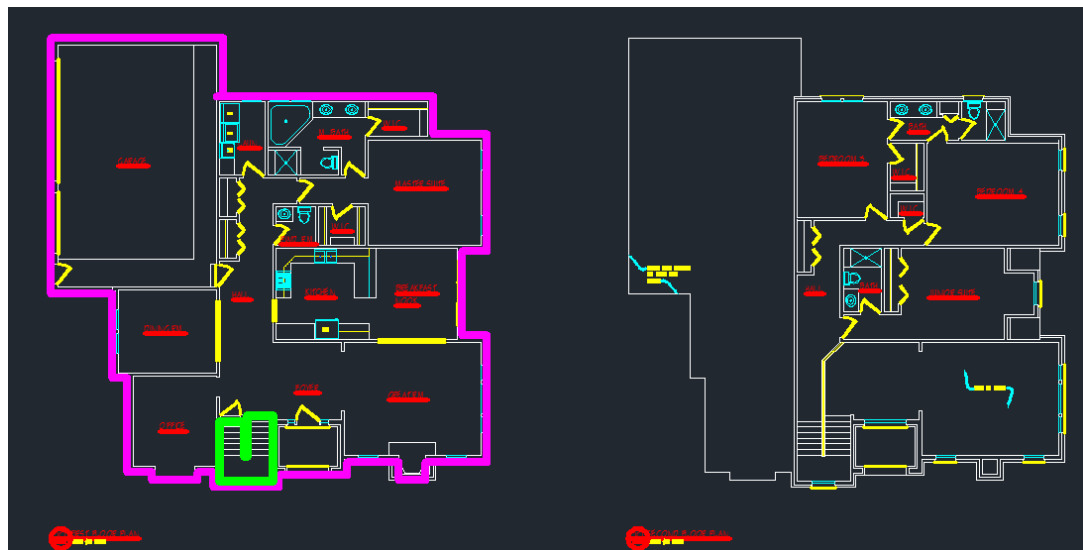
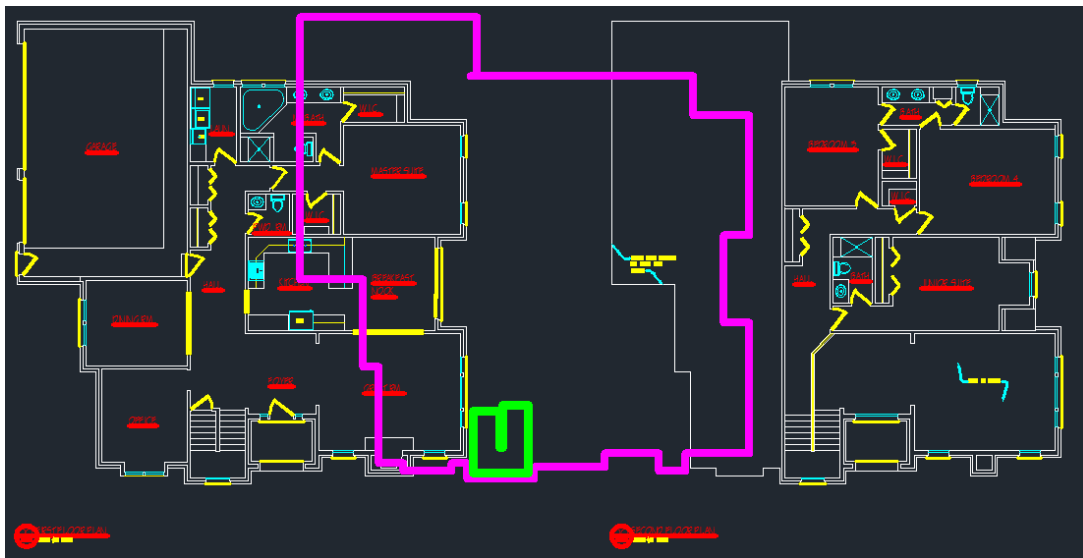
Refer to the example floor plan you brought in for your dream house to give you a rough idea of room sizes. Also refer back to your bubble, rough and block floor plans for how you wanted to lay out your house.

3. When you are drawing out the 2nd floor plan be sure it aligns with the 1st floor walls below and your staircase matches from the 1st floor to 2nd floor.

A good way to check this is to draw a Polyline (PL) around the perimeter of your second floor and then another around the perimeter of your staircase. Draw this in a color such as magenta or green that will be easy to see.

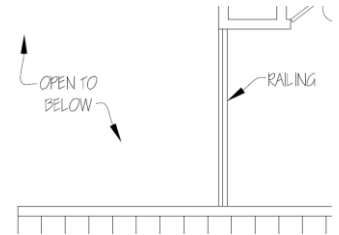
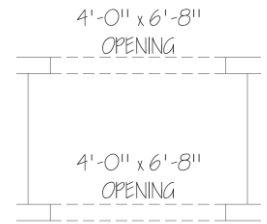


Move the polyline (PL) perimeter outlines over to the first floor. Check to see the walls and staircase align as needed.



4. Following are tips for other items such as doors, windows, and fixtures, proceed to add these items in CAD.

- Doors and cased openings (*Door Layer*)
- Windows- You may size these on your own starting at 9” width and increasing in 3” increments or select actual windows from a Window manufacture such as Jeld-Wen Windows <http://www.jeld-wen.com/catalog/windows> (*Window Layer*)
 - o For brick walls on exterior doors and windows show brick mold
- Countertops- 2’-0” depth for kitchen and 1’-9” depth for bathrooms. (*Wall Layer*)
- Upper cabinets 1’-0” depth and hidden lines (*Wall 2 Layer*)
- Bathroom Fixtures (*Fixture Layer*)
- Kitchen Fixtures (*Fixture Layer*)
- Room Names (*1-4 LG text size, Underlined & Capitalized, on the TITLE layer*)
- Handrails around stairs or balconies show it as 2 lines, 2” apart.
- FIRST FLOOR PLAN and SECOND FLOOR PLAN Titles, (*Title Layer, 1-4TITLE size*)



5. Once you are complete, insert your 1st and 2nd floor plans on a D-Size Sheet into Paper Space at 1/4" = 1'-0". (*Create a new D-size sheet paper tab if needed.*) Fill out the title block as necessary and plot this sheet to the HP Designjet T2300ps PS3.

<div style="border: 1px solid black; width: 90%; margin: 0 auto; height: 280px;"></div> <p><u>FIRST FLOOR PLAN</u></p>	<div style="border: 1px solid black; width: 90%; margin: 0 auto; height: 280px;"></div> <p><u>SECOND FLOOR PLAN</u></p>	
<p>RET ARCHITECTURE FIRM 99300 JEWELL BLVD WASHINGTON, MI 48094 (P) 586.751.0345 (F) 586.752.0459</p>		<p>PROJECT: NAME RESIDENCE SHEET NO. 01 OF 02 DATE: 12/15/11 DESIGNED BY: JTB/STP/AMT CHECKED BY: JTB/STP/AMT</p>
<p>SCALE: 1/4" = 1'-0"</p>		<p>TITLE SHEET A-00 of 00</p>