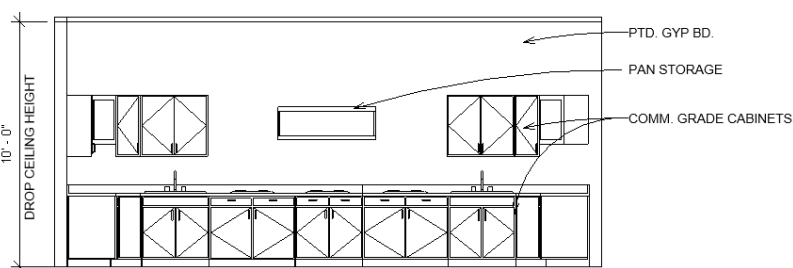
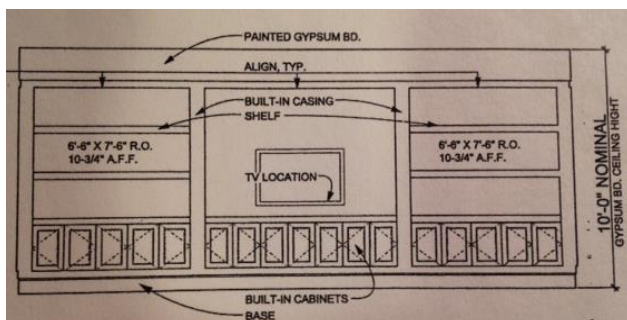


Commercial Project- Interior Elevations

Interior elevations are a way to show what the rooms will look like from a person's perspective. Unlike floor plans, you can show the height of vertical items.

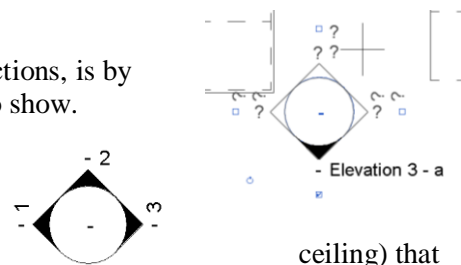


Above are a few examples of interior elevations. Note the following:

- 1) The ceiling height is called out.
- 2) Notes are included on each elevation.

Directions

- 1) Select and draw six important interior elevations of your commercial space.
- 2) Go to **View Tab: Elevation**: Then in the properties switch it to an **Interior Elevation**.
(To place the view, below clicking on the plan where you want it, hit your tab key and it will change the direction of the view. If it gives you an error about not showing up, make sure you don't have this element hidden at this time.)
- 3) A quick way to show an interior elevation bubble, viewing in multiple directions, is by selecting it and then clicking on the box of the other directions you want to show.
- 4) After you pick set your six views, go back and rename them 1-6.
- 5) From the project browser, go into each interior elevation and open up the view port box so you can see all the elements (walls to floor to you want to show for that interior elevation. Also set them up at $3/8'' = 1'-0''$ so text shows up the correct size.
- 6) Using text size **1/8" ARIAL**. Add notes to each interior elevation and a ceiling height & type designation. Focus on alignment and correct arrow placement.
- 7) Set your six interior elevations on a sheet. Arrange the page so they are in order, and are spaced neatly.
- 8) Title each interior elevation with its room name and number.
- 9) **Formative Check**: Plot a full-size D-size sheet. Have the person who checked your ADA detail, red-mark your interior elevations. Turn in the D-size sheet with red-marks included into teacher for red-marks.
- 10) **Summative Check**: Pick up red-marks from Formative Check. Re-plot on A-size sheet (fit to page) and submit for review along with old red marks.



Standards Used:

Develop interior and exterior elevations (m8) Arrange and coordinate drawings (q4) Utilize computer technology when communicating concepts and designs.(f3)