

Commercial Project- Exterior Elevations

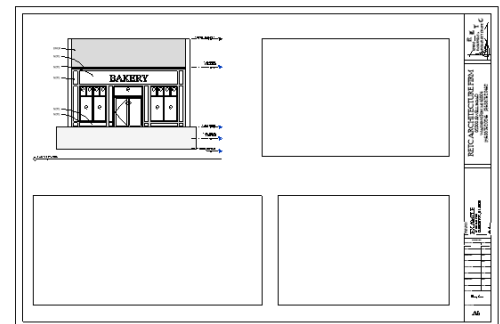
You will now be adding material notes and door and window tags to your exterior elevations.



Directions

- 1) Using text size **1/8" ARIAL**. Add notes to each elevation so it is fully understood what the elements/ façade materials being shown are. Focus on alignment and correct arrow placement.
- 2) Adjust your elevation dimensions so they are aligned and not spaced too far away from the building.
- 3) Draw a heavy detail line at your grade level to “ground-down” the building.
- 4) Using the ‘region’ command create an area filled of the ‘earth’ pattern below the grade line.
- 5) Place your (4) elevations on a sheet. If you can fit all four on one sheet that is the best, if you cannot then you will have two sheets.
- 6) Title each elevation as shown in the example at the right.
- 7) **Formative Check:** Plot a full-size D-size sheet. Have the person who checked your ADA detail, red-mark your elevations. Turn in the D-size sheet with red-marks included into teacher for red-marks.
- 8) **Summative Check:** Pick up red-marks from Formative Check. Re-plot on A-size sheet (fit to page) and submit for review along with old red marks.

1 EAST ELEVATION
1/4" = 1'-0"



Standards Used:

Develop interior and exterior elevations (m8) Arrange and coordinate drawings (q4) Utilize computer technology when communicating concepts and designs.(f3)