

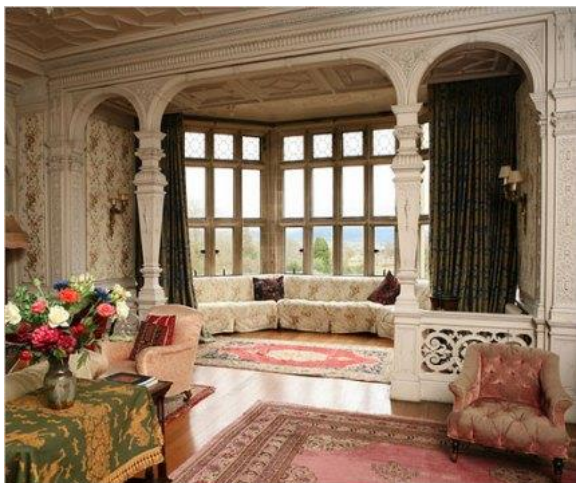
Movie Set Design

There is no doubt that the design of the movie set truly does “set-the stage” for the movie. Millions of dollars are spent on the set of a movie, whether it is a physical or virtual set. Set designers need to have a clear vision and be able to explain to others working on the movie, what they want the final outcome to look like. Because of the close relation of the fields, architects have become set designers because of their knowledge of the built environment. Mechanical Engineers then review the architect’s (designer’s) illustrated plans and physical models, and discuss the specific process and means and methods to accomplish the automation or structural needs of the set. Mechanical Engineers help ensure safety on the set for moving parts, fire, explosions, loud noises, lasers, fast cars and motorcycles, people suspended on flying rigs, and more.

Design Concept

Come up with a movie you would like to design a set for a scene in that movie. It can be a movie you completely made up or based on one already existing. (*However, if you select an existing movie, do not simply copy a set already designed, you will need to design your own.*) Once you select a scene in the movie and decide what will be happening in that scene, write a few sentences explaining what you envision occurring in that scene. Knowing what you want moviegoers to see and experience as they watch this scene will help you visualize your design concept.

What is your scene and what do you envision happening in it?



The two pictures above both show a living room with a large window overlooking landscaping. However, they give off two varying feelings. This is because of the different use of styles, colors, varying landscaping beyond, the time of day, and the objects used.

Once you have selected your scene, and have a vision of what you want happening in it, bring it to the next level. Don't just think about the set itself, think about the mood, the costumes, sounds, even the temperature that would be present. You want your scene's design concept to be an integrated whole, evoking a clear, immediate interpretation of the scene by the viewers. For example some elements to consider could be:

main ideas
style
setting
atmosphere
time period

characters
colors
images
words
movement

symbols
objects
shapes and mood
sounds
and more...

Presentation

You will create a Presentation Board explaining your set design on given poster board. You will then present your board and ideas in front of the class.

Planning out your presentation is an essential component of the design process and should be given careful consideration. The presentation of the project should be clear, neat, artistic and methodical. Although you will be presenting it in front of the class, the presentation board should be able to explain its purpose without having someone explain it. You will be given some materials in class, however feel free to seek out additional resources (magazines, color printer, additional presentation board materials from home)

Presentation Requirements

Your Set Design Presentation Board should include the following at the minimum:

- Title of the Movie and the stated "scene".
- Your Set Design Concept statement.
- A hand sketched floor plan of your movie set
- At least one hand sketched perspective of your movie set
- Diagram/ Sketch/ Drawing of the mechanical aspect of the set and how it works.
- Your name(s) and date
- Any additional pictures, sketches, or information that will help get your idea across.
- Grammar and spelling, organization and neatness are important.

Materials Provided:

Poster Board
 Scissors
 Markers, Colored Pencils, Crayons
 Mylar for desk protection
 Glue
 Tape
 Computers- Black and White Printer

Standards:

F1: Deliver a presentation that explains a concept of design or preconstruction.
 F2: Employ facilitation skills while leading meetings that involve a variety of clients and agencies.
 D1: Understand social, environmental and political factors that affect the project.
 F2: Develop design criteria for building systems in a given scenario.
 A (1-6) : Use leadership and teamwork skills in collaborating with others to accomplish organizational goals and objectives.
 B2: Identify and explore career opportunities in one or more career pathways to build an understanding of the opportunities available in the cluster.
 E2: Use communication skills and strategies to work effectively with people (including clients, team members, and others).
 E3: Draw and sketch by hand to communicate ideas effectively.
 L1: Examine space relationships

C1-4: Apply concepts and processes for the application of technology to engineering.
 B1: Apply the design process, including understanding customer needs, interpreting and producing design constraints and criteria, planning and requirements analysis, brainstorming and idea generation, using appropriate modeling and prototyping, testing, verification, and implementation.

Examples of set design floor plan and perspective sketches

V3 LAB FLOORPLAN 7.2.2012 S. HUMAN

