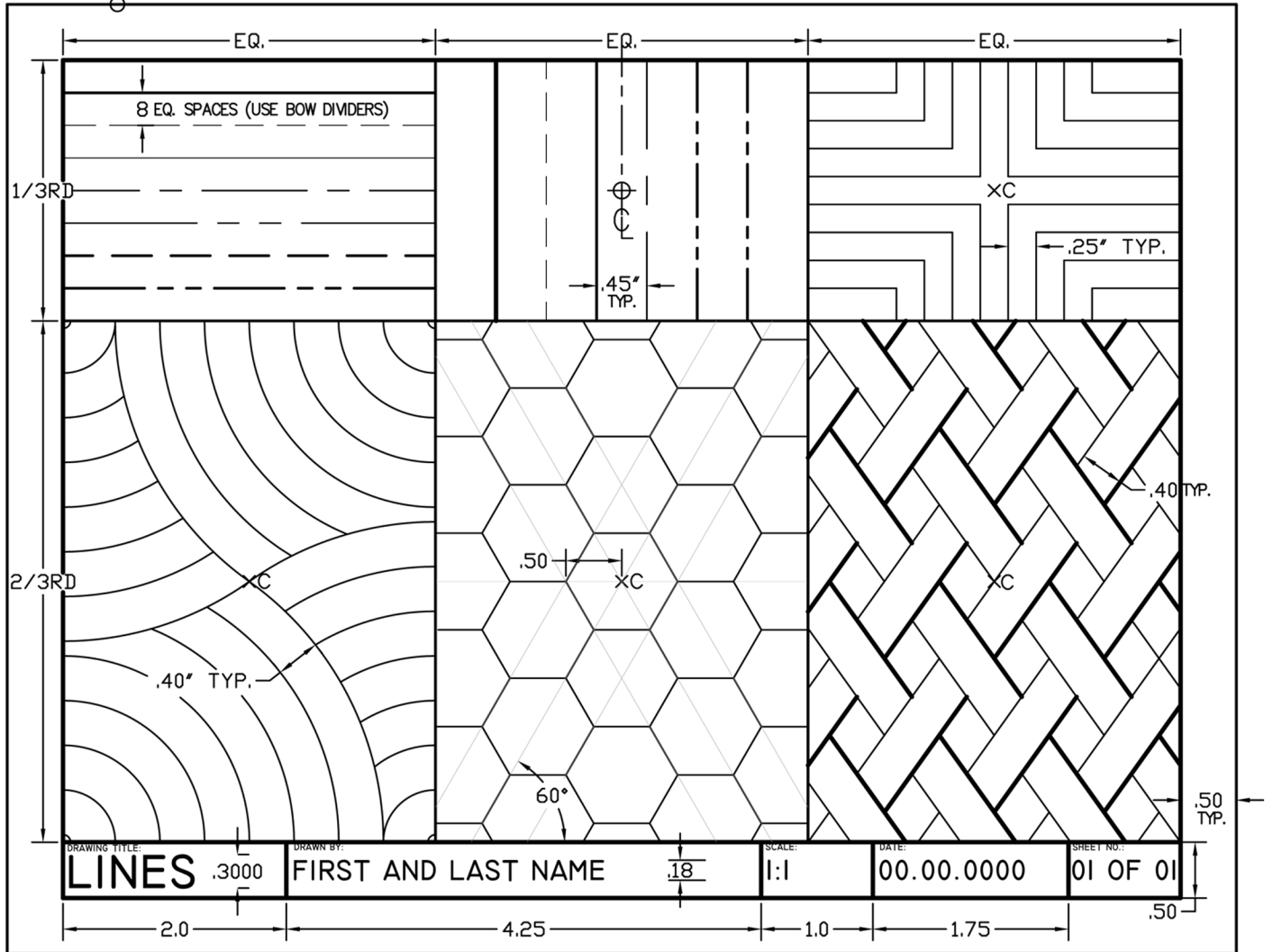


HAND DRAFTING- LINES

8.5"x11" SHEET



USING AN A-SIZE SHEET OF PAPER, DIVIDE THE SHEET, AND DRAW THE LINES AS SHOWN. BE AWARE OF THE LINETYPE AND WEIGHT AS YOU DRAW, NEATNESS AND ACCURACY IS A KEY OBJECTIVE, (DRAWINGS ARE NOT USEFUL IF THEY ARE NOT ACCURATE.) OMIT THE DIMENSIONS, GUIDELINES AND INSTRUCTIONAL NOTES.

NAME	HOUR	DATE
_____	_____	_____
_____	_____	_____