

## Dream House Design Requirements

You soon are going to begin designing your dream home. Start by finding floor plans and elevations of a house similar to what you want to design that has the Dream House Requirements listed below. You can find these on-line or in house plans books.

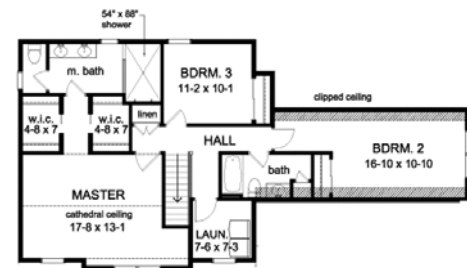
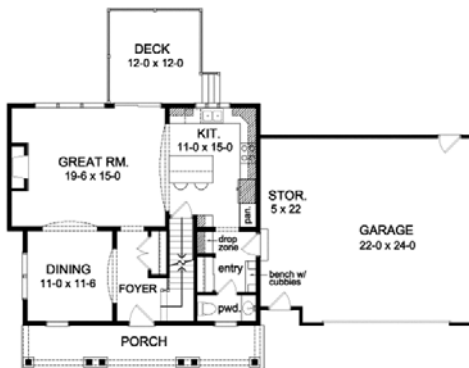
Keep in mind the floor plan you find is only going to be used as a reference or starting point for your design. You are encouraged to make design changes to the plan to make it your own. (*Plans usually have a copywrite and it is unethical to 100% copy someone else's design.*) For example, you may want to change the kitchen layout, move a bedroom location, switch the garage doors from front car to side car entry, etc.

Keep in mind as the planning and floor plan develops additional requirements will be realized.

## Dream House Requirements

- 2,000 to 2,500 Sq. Ft. Total
  - 2-Story
  - 3-4 Bedrooms
  - 1.5 to 2.5 Bathrooms
  - Kitchen
- Dining and or Eating Area
- Family Gathering Area (Great Room, Family Room, Living Room for example)
  - Foyer
  - Laundry Area
  - Basement
- Attached 2- Car Garage

*Pictured below is an example of a First Floor Plan, Second Floor Plan, Front Elevation Rendering and Rear Elevation. Drawings like these will help you during your own design process.*



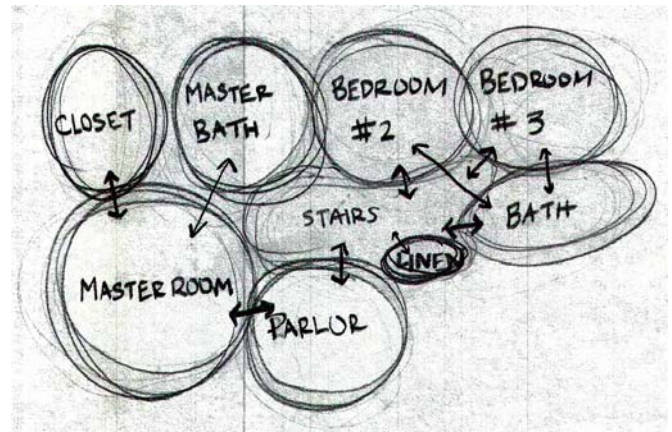
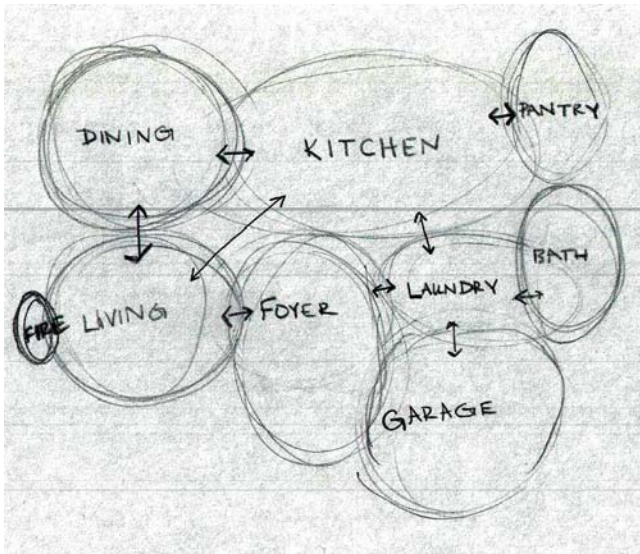
Make two copies of the 1<sup>st</sup> and 2<sup>nd</sup> floor plans and elevations that you find. Turn one copy into me and keep the second copy for your reference.

## Bubble, Block and Rough Floor Plan Sketches

Sketch the following drawing types for your Dream House. You should do these for both the 1<sup>st</sup> and 2<sup>nd</sup> floor plan. Do each sketch for each floor plan on its own A-size sheet of paper. **Title, sign and date each** of your sketches. These sketches will be collected and scanned in for your portfolio to show that you are familiar with the process of design.

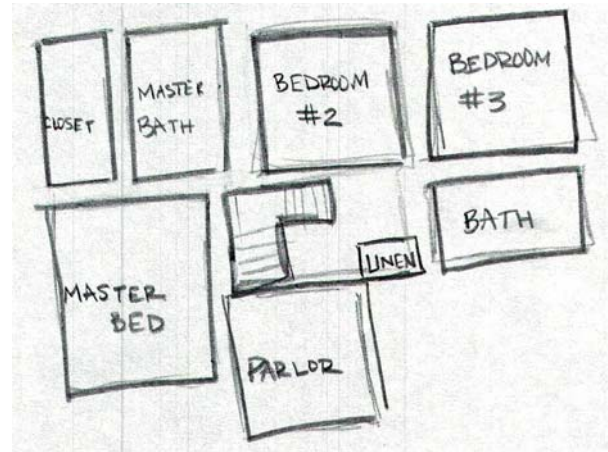
### 1. Bubble Diagram: Show the relationship between the rooms (spaces).

Group and link up the spaces (rooms) that you will have in your house. The bubble diagram is a good way of showing what spaces (rooms) you are going to have in your house and how they relate to each other. Title them 1<sup>st</sup> floor Bubble Diagram, 2<sup>nd</sup> Floor Bubble Diagram.



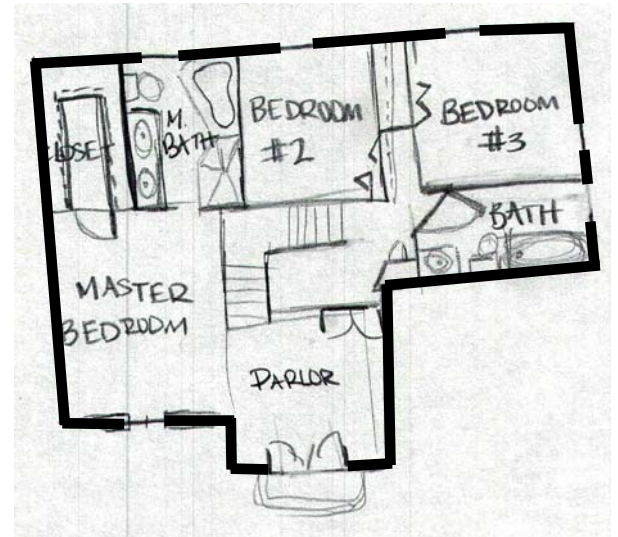
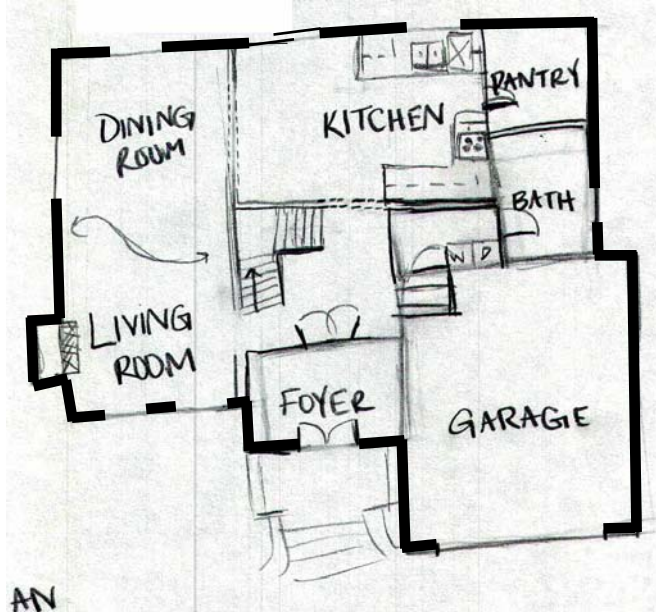
### 2. From the Bubble Diagram develop a Block Diagram

Below shows how to make the bubble representation of spaces and activities you connected and grouped up into a floor plan. This is a good time to think about traffic patterns in the house. For instance, you do not want to go through private areas (bedrooms) to public (kitchen) and semi-public spaces (office). Label them 1<sup>st</sup> Floor Block Diagram, 2<sup>nd</sup> Floor Block Diagram.



### 3. Draw a Rough Floor Plan Outline

Draw a basic floor plan showing exterior and interior walls. As you go on you will start to refine your floor plan further with more interior walls, windows, stairs and major fixtures. Label them 1<sup>st</sup> Floor Rough Floor Plan, 2<sup>nd</sup> Floor Rough Floor Plan.



\*\*\*\*\* As Always- Title, Sign and Date each of your sketches \*\*\*\*\*