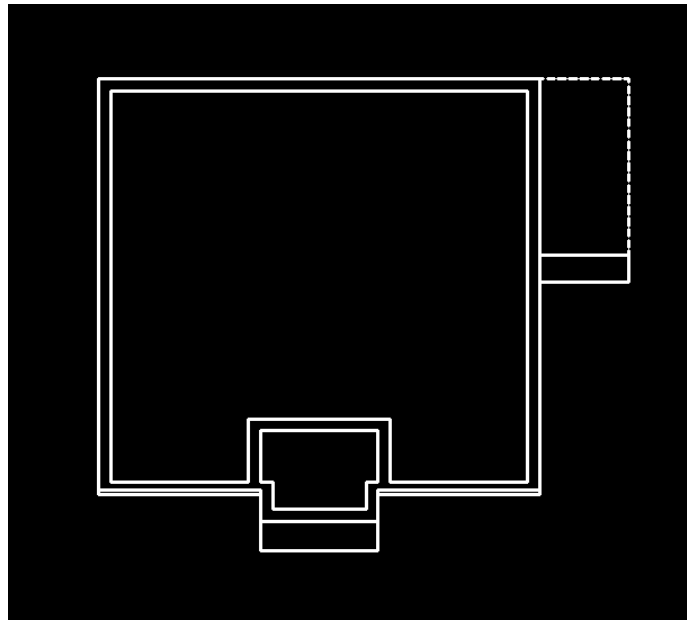


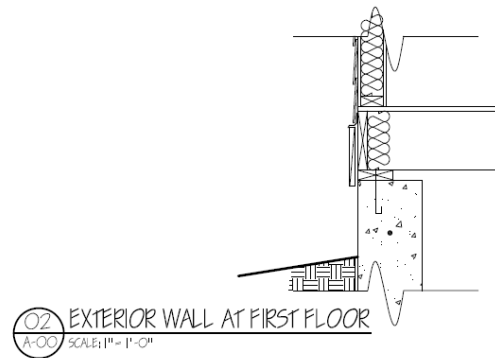
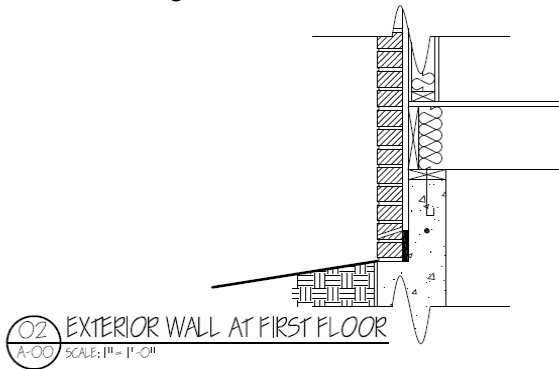
## Foundation Plan Cottage Design

You will now draw the Foundation Plan for your cottage. Reference to the CAD Foundation Plan Example given to you. The Cottage will be on a crawlspace foundation. To draw the foundation plan do the following.

1. Copy the outline of the floor plan (The building footprint). Offset the line in 10" for a 10" thick poured concrete foundation wall.

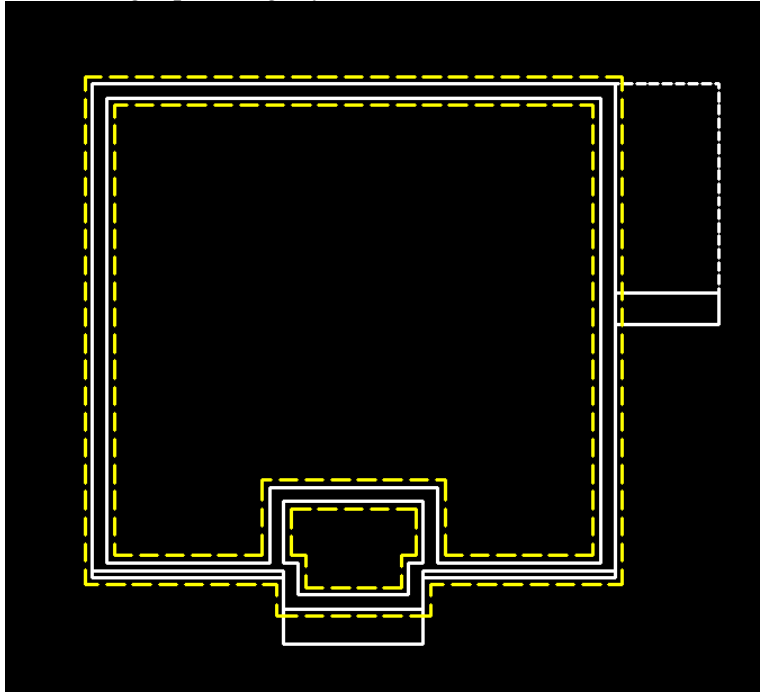


2. If you have masonry, show a line offset 4" in from the outside for a 4" brick ledge. If you have siding or logs, simply keep your 10" poured concrete wall lines as is. Below are two details showing you why you need to show a brick ledge at a brick wall.



3. At the location of the deck, show 4" thick Concrete Pad at the stairs and 12" concrete piers at the outer corners and all support areas of the deck. At the location of the front porch also show a concrete pad at the location of the stairs. Refer to the CAD file given to you to see how to represent this.

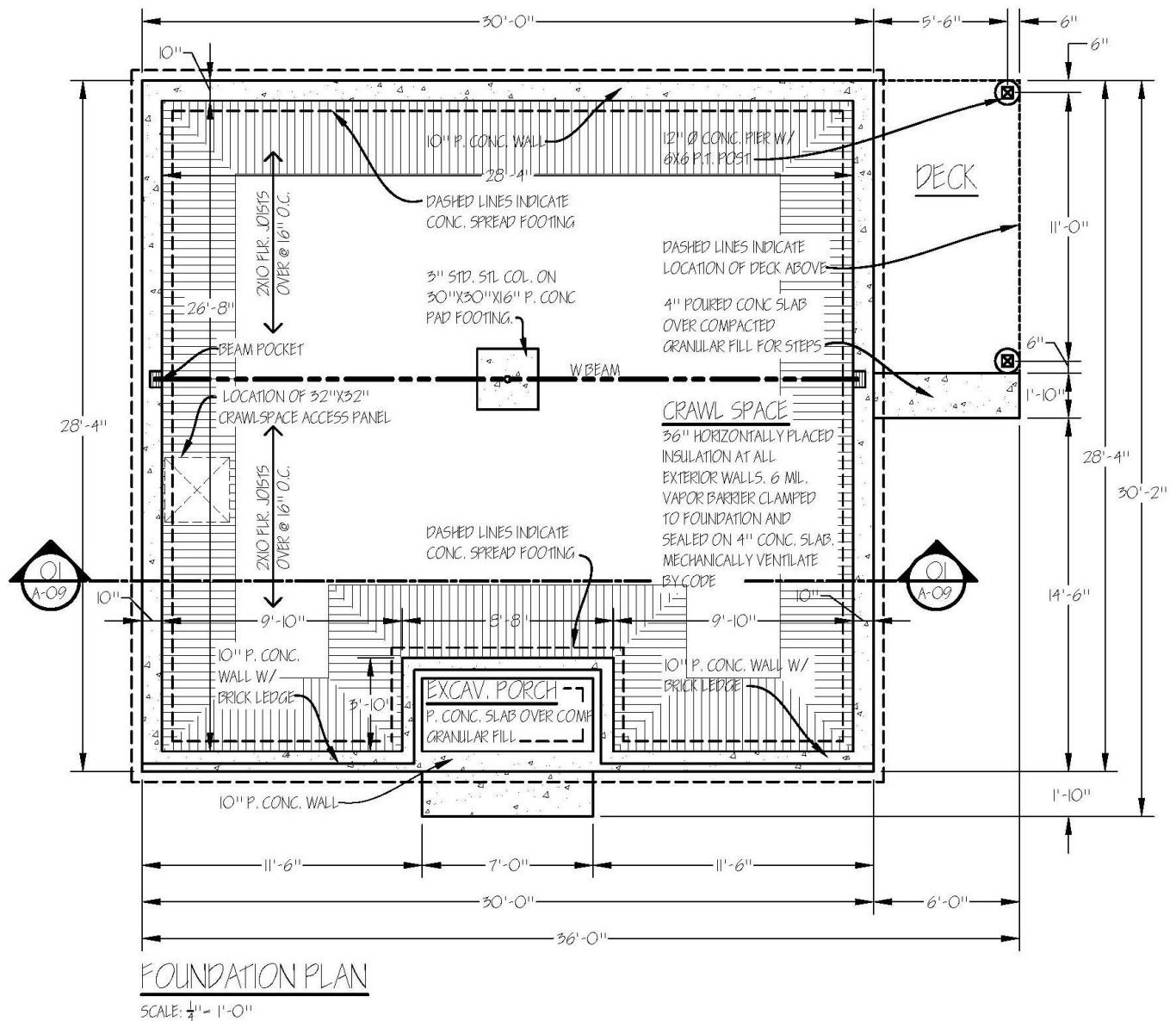
4. Offset from the outside of the foundation wall, 5" in each direction to represent the foundation footing. The footing line should be a larger dash line size so change it to a HiddenX2 line type if needed, and change the layer to WALL2 so the lineweight plots slightly thinner.



5. Dimension the foundation plan. Just as with the floor plan, hold the first dimension string 2'-0" from the wall, then space each one after that 1'-6".
6. Add the notes and structural elements to the Foundation Plan as shown in the example. Notes are to be on the NOTES layer and at 1-4 MED. Be sure to align your notes as much as possible and place and draw leader lines properly. The leader lines should be drawn at 1-4MED, on the NOTES layer.
7. Add the concrete hatch in the correct locations. You can match your hatch with the pattern given to you in the library. Be sure you draw your hatch on the HATCH layer.
8. Add the title and scale to the drawing, FOUNDATION PLAN (Title Layer, 1-4TITLE) and Scale: 1/4"=1'-0" (Notes Layer, 1-4 Med)



Below is an example of a completed foundation plan.



Standards met:

- M4. Develop basement and foundation plans
- O2. Draw framing plan
- O3. Analyze structural systems
- Q4. Arrange and coordinate drawings
- I5. Draw and modify lines
- I8. Place dimensions and local/general notes