

MULTIVIEW PROJECTION DRAWING PROBLEMS

Book reference pages 146- 153

LEARNING OBJECTIVES: After your reading and class discussion you will be able to draft the six standard views of an object, transfer dimensions between views, layout a drawing, and apply conventional drafting standards to a drawing.

The following topics are being covered:

- Views of an Object
- Revolving the Object
- The Six Views
- Orientation of Front View
- Necessary Views
- Two View Drawing
- One-View Drawing
- Hidden Lines
- Center Lines

Applied Practice:

Draft in AutoCAD the following figures as directed by the teacher.

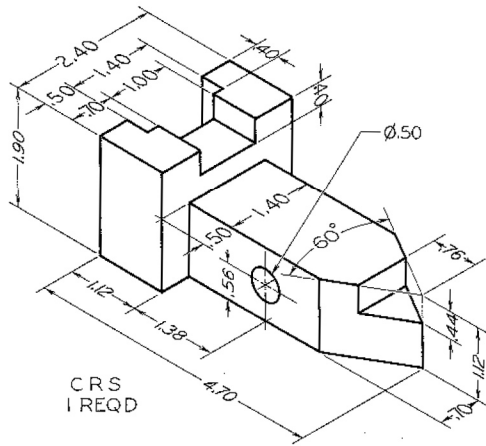


FIGURE 6.55 Safety Key (Layout A-3).^a

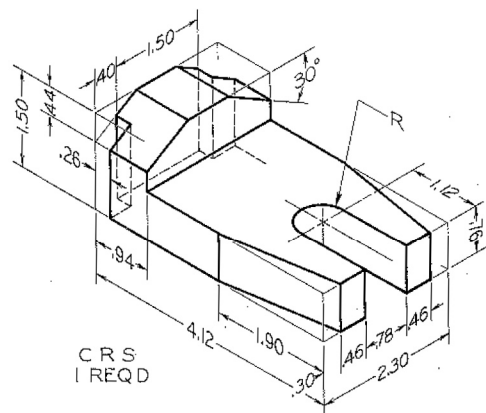


FIGURE 6.56 Finger Guide (Layout A-3).*

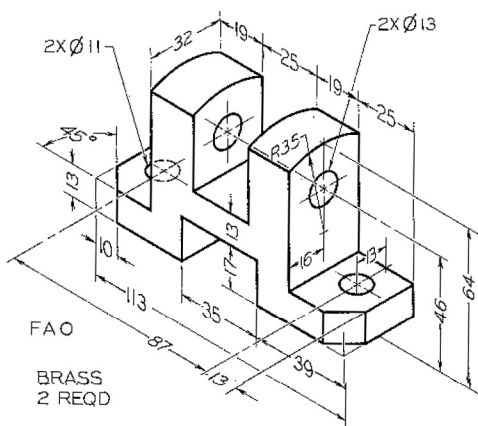


FIGURE 6.57 Rod Support (Layout A-3).*

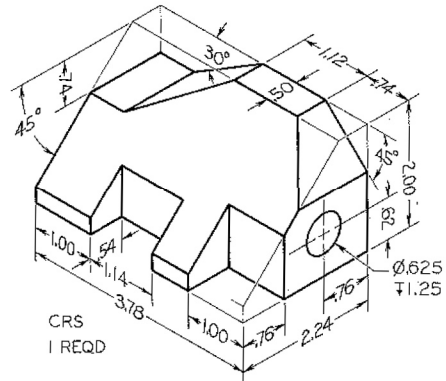


FIGURE 6.58 Tool Holder (Layout A-3).*

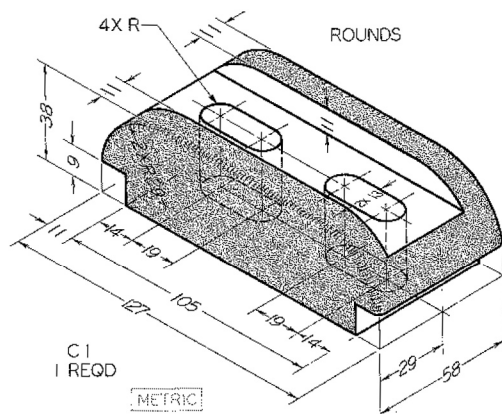


FIGURE 6.59 Tailstock Clamp (Layout A-3).*

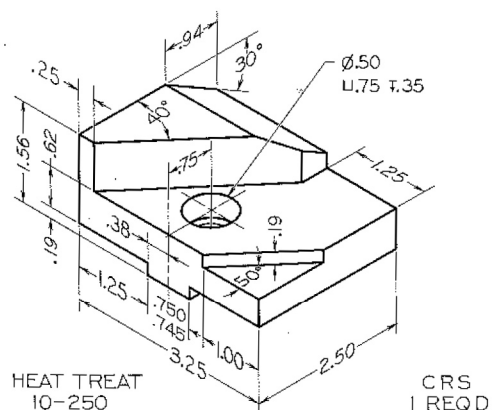
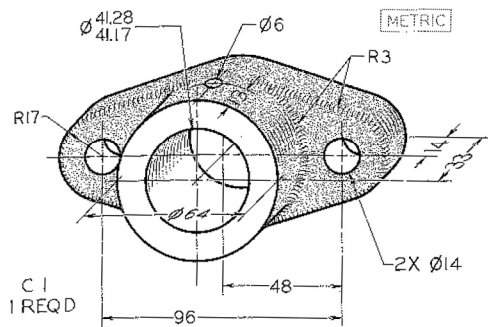
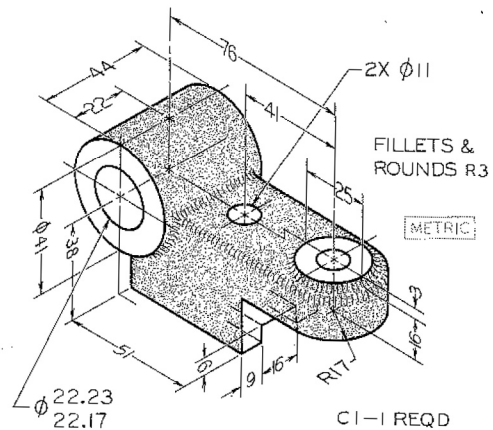
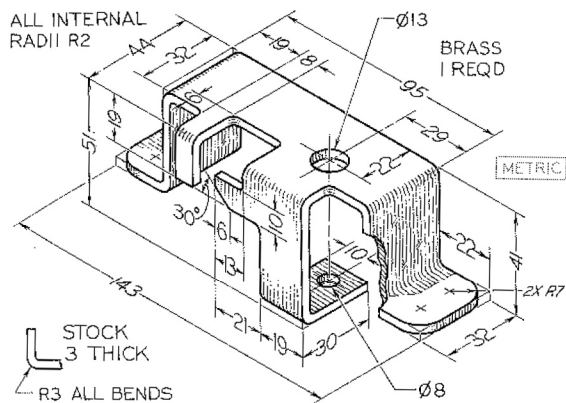
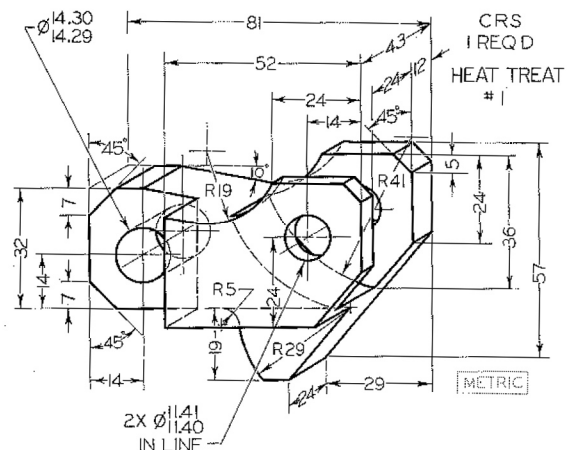
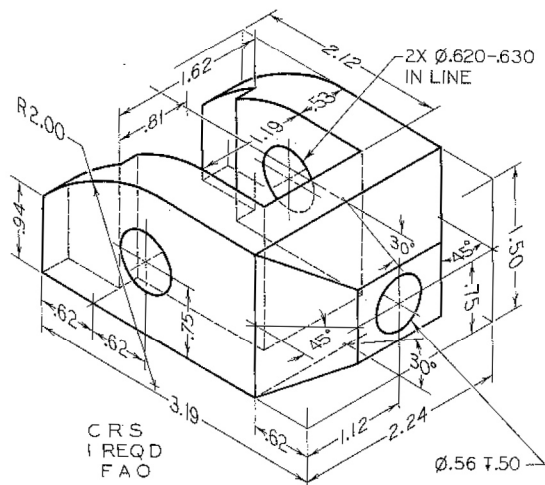
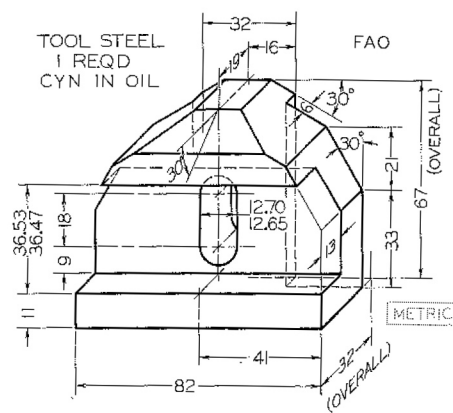


FIGURE 6-60 Index Feed (Layout A-3).*

* Draw or sketch necessary views. Layout A4-3 (adjusted) may be used. If dimensions are required, study §§11.1-11.25. Use metric or decimal-inch dimensions as assigned by the instructor.


 FIGURE 6.61 Bearing (Layout A-3).^{*}

 FIGURE 6.64 Index Arm (Layout A-3).^{*}

 FIGURE 6.62 Holder Clip (Layout A-3).^{*}

 FIGURE 6.65 Roller Lever (Layout A-3).^{*}

 FIGURE 6.63 Cam (Layout A-3).^{*}

 FIGURE 6.66 Support (Layout A-3).^{*}

^{*} Draw or sketch necessary views. Layout A4-3 (adjusted) may be used. If dimensions are required, study §§11.1-11.25. Use metric or decimal-inch dimensions as assigned by the instructor.



FIGURE 6.97



FIGURE 6.98



FIGURE 6.99

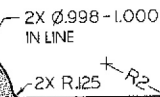


FIGURE 6.10



FIGURE 6.10

* If dimensions are required, study §§11.1–11.25. Use metric or decimal-inch dimensions as assigned by the instructor.