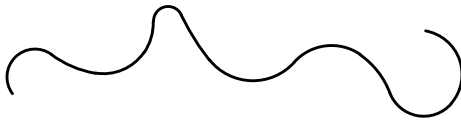


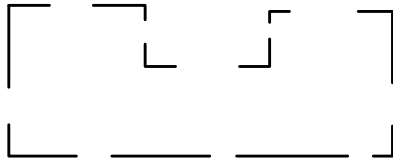
1. USE THE ARC COMMAND TO DRAW THE FOLLOWING



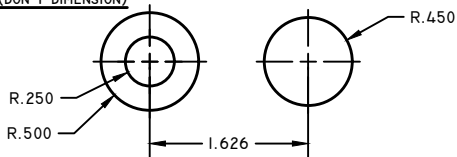
2. USE THE ARC COMMAND TO DRAW THE FOLLOWING



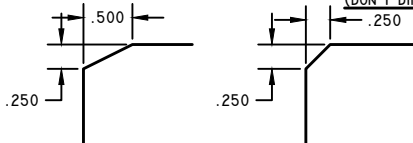
3. USE THE BREAK COMMAND BREAK THE LINE AS SHOWN



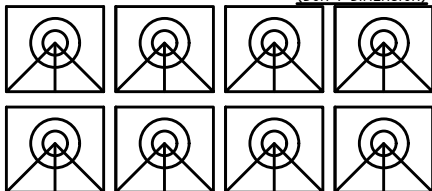
4. USE THE CIRCLE COMMAND TO DRAW THE FOLLOWING (DON'T DIMENSION)



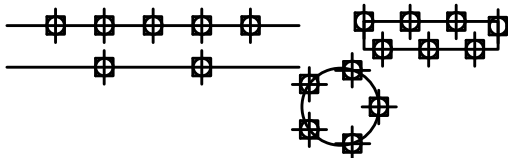
5. USE THE CHAMFER COMMAND TO DRAW THE FOLLOWING (DON'T DIMENSION)



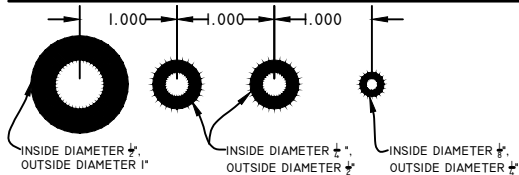
6. USE THE COPY COMMAND TO DRAW THE FOLLOWING (DON'T DIMENSION)



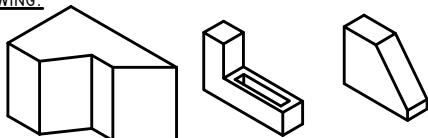
7. USING THE DIVIDE COMMAND TO DIVIDE THE FOLLOWING OBJECTS. (REMEMBER TO TURN ON YOUR 'DDPTYPE' TO MATCH THE POINT STYLE SHOWN)



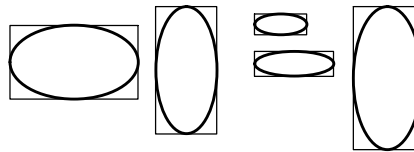
8. USE THE DONUT COMMAND TO DRAW THE FOLLOWING. (DON'T DIMENSION)



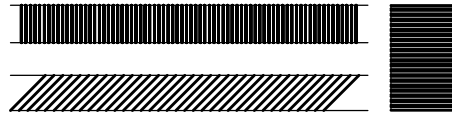
9. USE THE ERASE COMMAND TO REMOVE THE FOLLOWING PORTIONS OF THE DRAWING.



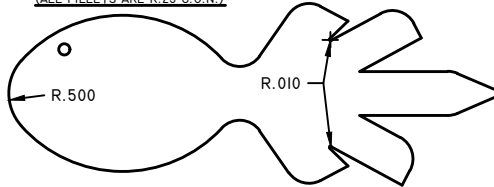
10. USE THE ELLIPSE COMMAND TO DRAW THE FOLLOWING IN THE GIVEN RECTANGLES.



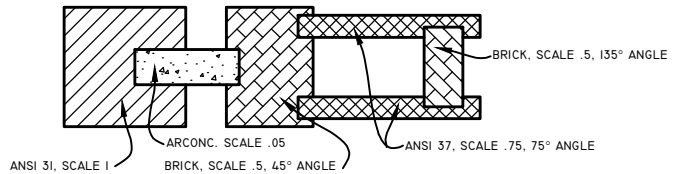
11. USE THE EXTEND COMMAND TO COMPLETE THE DRAWING.



12. USE THE FILLET COMMAND TO COMPLETE THE DRAWING. (ALL FILLETS ARE R.25 U.O.N.)



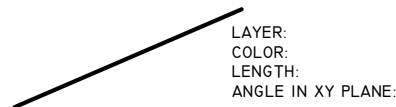
13. USE THE HATCH COMMAND TO COMPLETE THE DRAWING.



14. USE THE MTEXT COMMAND TO TYPE THE FOLLOWING. (USE TEXT STYLE 1)

AUTOCAD IS A WAY TO DRAFT ON THE COMPUTER.
HOT KEY COMMANDS SUCH AS "MT" FOR MTEXT
ALLOW YOU TO DRAFT FASTER!

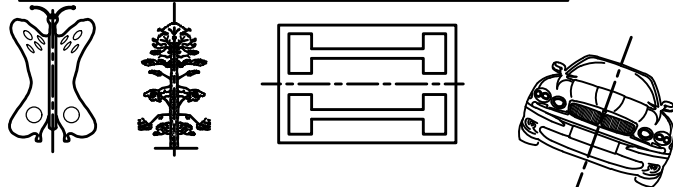
15. USE THE LIST COMMAND TO FIND OUT, THEN TYPE THE FOLLOWING INFORMATION ABOUT THE LINE SHOWN BELOW.



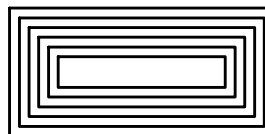
16. USE THE MOVE COMMAND TO MOVE THE ITEMS AROUND AS SHOWN.



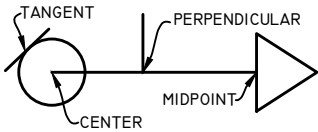
17. USE THE MIRROR COMMAND TO COMPLETE THE DRAWING BELOW.



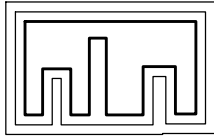
17. USE THE OFFSET COMMAND TO COMPLETE THE DRAWING BELOW. (OFFSET DISTANCE 1")



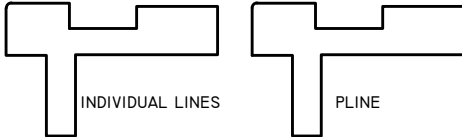
18. USE YOUR OSNAP SETTINGS TO HELP YOU DRAW THE FOLLOWING.
ESTIMATE THE DIMENSIONS- DRAFT IT PROPORTIONALLY.



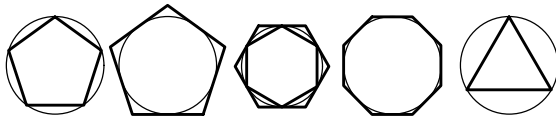
19. USE THE PLINE COMMAND TO DRAW THE FOLLOWING
THEN OFFSET TWICE.
ESTIMATE THE DIMENSIONS- DRAFT IT PROPORTIONALLY.



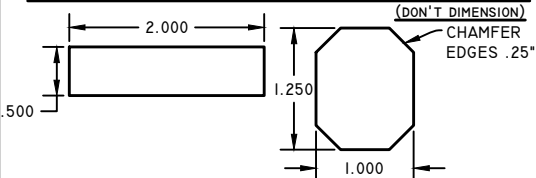
20. TURN THE FOLLOWING INTO A PLINE USING THE PEDIT COMMAND.



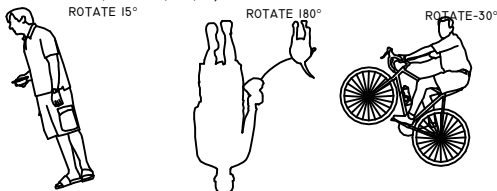
21. USE THE POLYGON COMMAND TO DRAW THE FOLLOWING.
(PAY ATTENTION TO THE LOCATION OF THE CIRCLE)



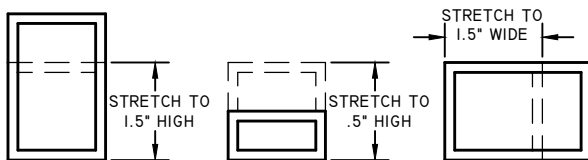
22. USE THE RECTANGLE COMMAND TO DRAW THE FOLLOWING



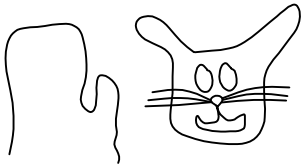
23. USE THE ROTATE COMMAND TO DRAW THE FOLLOWING
(HAVE THE BASE POINT FOR THE ROTATION BE AT THE PERSON'S FEET & YOU MAY HAVE TO MOVE IT AFTER)



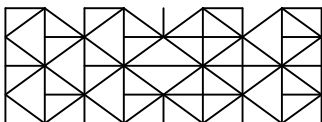
24. USING THE STRETCH COMMAND TO MODIFY THE WINDOW BELOW.



25. USE THE SPLINE COMMAND TO DRAW THE FOLLOWING.



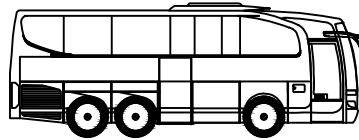
26. USE THE TRIM COMMAND TO REMOVE THE FOLLOWING PORTIONS OF THE DRAWING.



27. USE THE SPELL COMMAND TO FIX THE FOLLOWING TEXT.

THIS IS A PARAGRAPH OF TEFT. UNFOTUNTTLY THE PERSON WHO TYPED IT WAS NOT PAYING CLUSE ATTENTION IN THEIR ENGLIHS CLASS. IT IS VERY IMPOTANT TO SPEL WORDS CORRECTLY IN A DRAFTED DWAWING BECUASE PEOPLE ARE REAILYING ON YOU TO BE EXACT.

28. USE THE EXPLODE COMMAND SO YOU CAN SHORTEN THE BUS.



29. USE THE MTEXT COMMAND TO TYPE ALL OF THE CAD COMMANDS AND THEIR HOT-KEYS YOU HAVE LEARNED IN CLASS THE LAST TWO DAYS.
(USE TEXT STYLE 1)