

## Dream House Design Requirements

You soon are going to begin designing your dream home. Start by finding floor plans and elevations of a house similar to what you want to design that has the Dream House Requirements listed below. You can find these on-line or in house plans books.

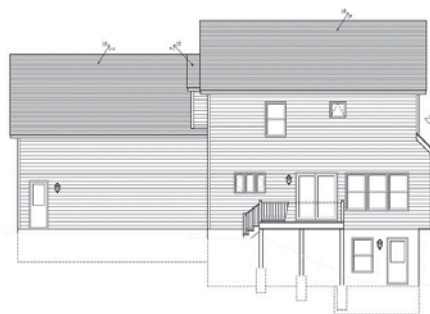
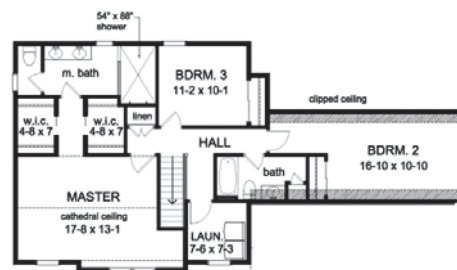
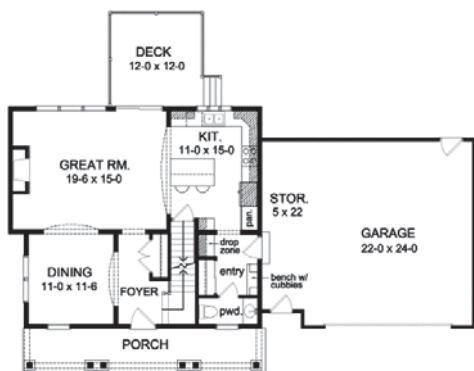
Keep in mind the floor plan you find is only going to be used as a reference or starting point for your design. You are encouraged to make design changes to the plan to make it your own. (*Plans usually have a copywrite and it is unethical to 100% copy someone else's design.*) For example, you may want to change the kitchen layout, move a bedroom location, switch the garage doors from front car to side car entry, etc.

Keep in mind as the planning and floor plan develops additional requirements will be realized.

## Dream House Requirements

- 2,000 to 2,500 Sq. Ft. Total
  - 2-Story
  - 3-4 Bedrooms
  - 1.5 to 2.5 Bathrooms
  - Kitchen
- Dining and or Eating Area
- Family Gathering Area (Great Room, Family Room, Living Room for example)
  - Foyer
  - Laundry Area
  - Basement
- Attached 2- Car Garage

*Pictured below is an example of a First Floor Plan, Second Floor Plan, Front Elevation Rendering and Rear Elevation. Drawings like these will help you during your own design process.*



Make two copies of the 1<sup>st</sup> and 2<sup>nd</sup> floor plans and elevations that you find. Turn one copy into me and keep the second copy for your reference.

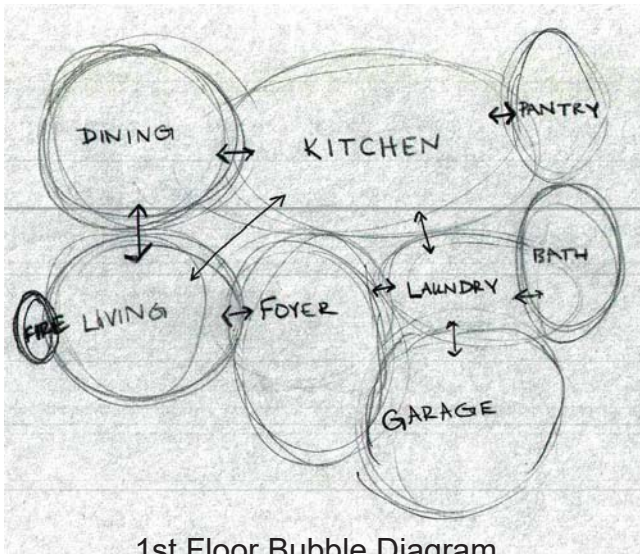
## Bubble, Block and Rough Floor Plan Sketches

Sketch the following drawing types for your Dream House. You should do these for both the 1<sup>st</sup> and 2<sup>nd</sup> floor plan. Do each sketch for each floor plan on its own A-size sheet of paper. **Title, sign and date each** of your sketches. These sketches will be collected and scanned in for your portfolio to show that you are familiar with the process of design.

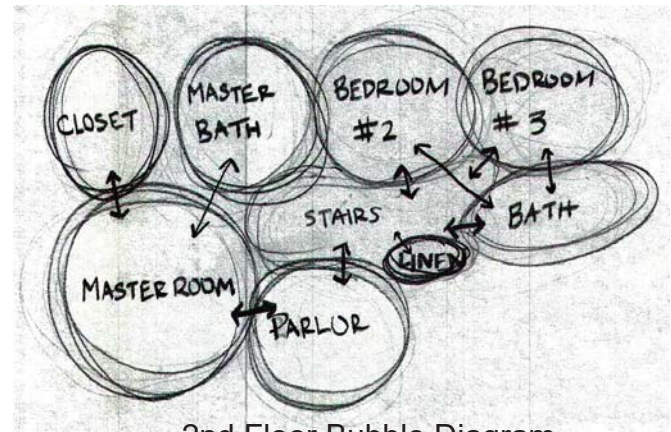
### 1. Bubble Diagram: Show the relationship between the rooms (spaces).

Group and link up the spaces (rooms) that you will have in your house. The bubble diagram is a good way of showing what spaces (rooms) you are going to have in your house and how they relate to each other. Title them 1<sup>st</sup> floor Bubble Diagram, 2<sup>nd</sup> Floor Bubble Diagram.

\* With each sketch always add the title, your name and date.



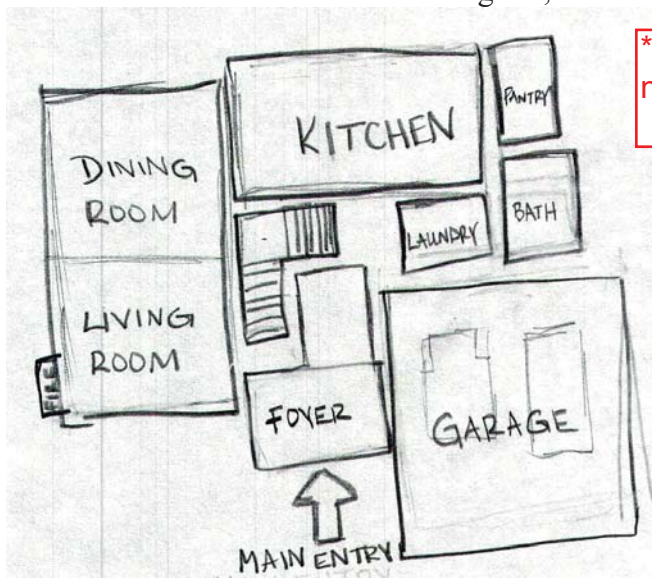
1st Floor Bubble Diagram



2nd Floor Bubble Diagram

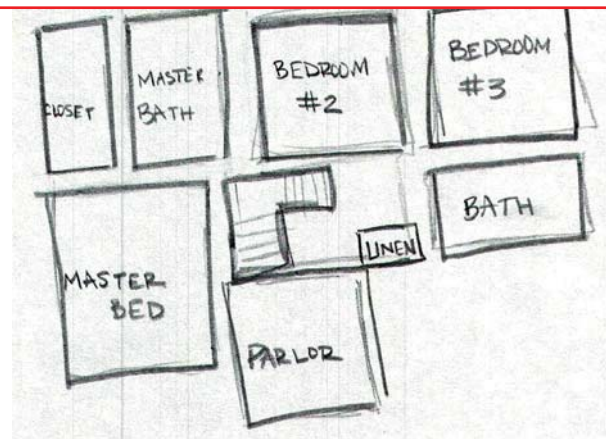
### 2. From the Bubble Diagram develop a Block Diagram

Below shows how to make the bubble representation of spaces and activities you connected and grouped up into a floor plan. This is a good time to think about traffic patterns in the house. For instance, you do not want to go through private areas (bedrooms) to public (kitchen) and semi-public spaces (office). Label them 1<sup>st</sup> Floor Block Diagram, 2<sup>nd</sup> Floor Block Diagram.



1st Floor Block Diagram

\* With each sketch always add the title, your name and date.



2nd Floor Block Diagram