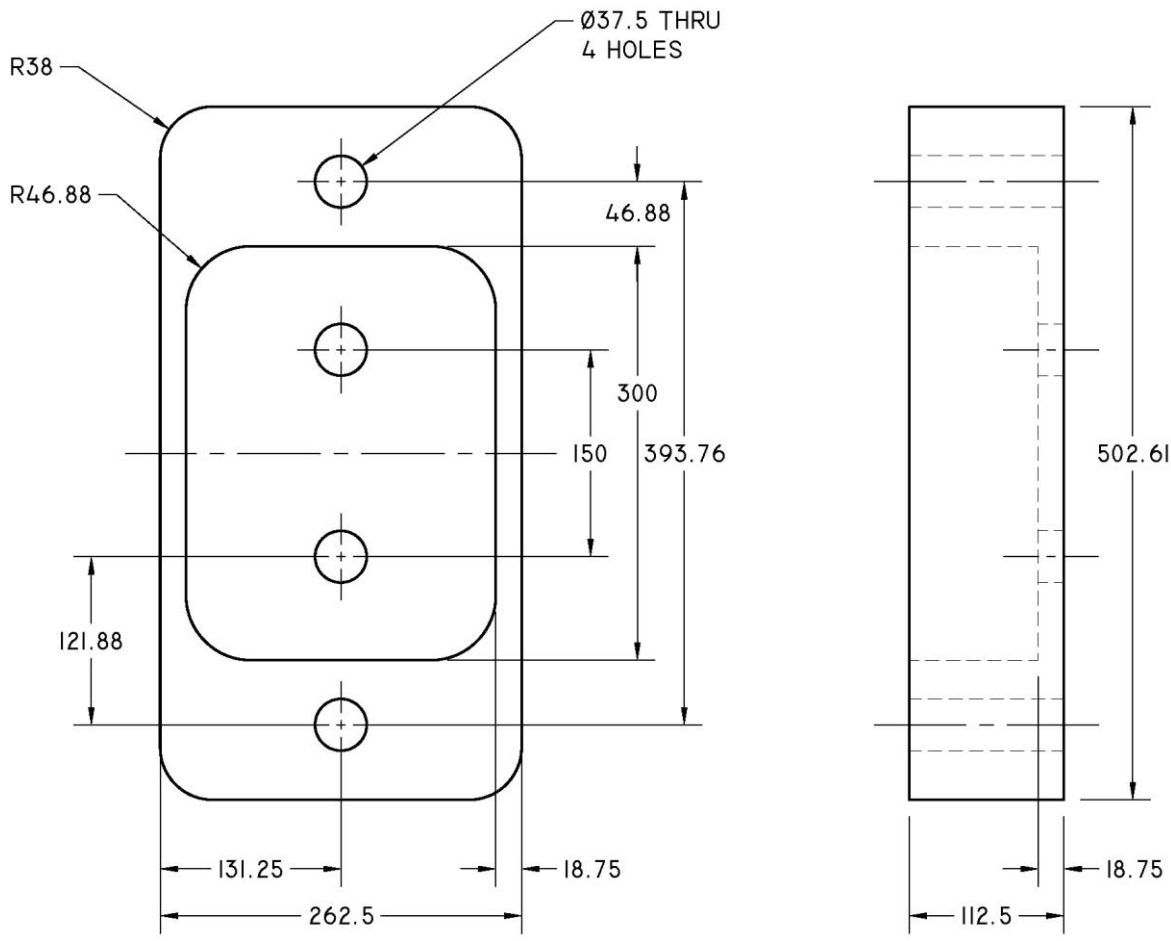


ASSEMBLY HOUSING

1. Open up your "BLANK DRAWING TEMPLATE- MM". Dwg file
2. Perform a Save-As and save the file as ASSEMBLY HOUSING-YOUR LAST NAME in your **Drafting** folder.
3. In CAD draft the following views of the object. Draw items on the correct layers and at the correct measurements.
Do not dimension at this time.



4. Go into Paper Space and set your drawing up so it can fit on an A-size sheet of paper. You will have to determine what scale will best fit on this sheet size.
5. Based on the scale you inserted your drawing into Paper Space, go back now and add dimensions using the correct dimension style for that scale.
6. Fill out your title block and print off this drawing for checking.

By completing this, students will be able to...

Measure lines, angles, and geometric features (d1)

Select and interpret scale and paper size (d9)

Identify and operate design tools/instruments (CAD and/or manual) (d10)

Draw lines and curved elements (g1)

Demonstrate knowledge of multiview drawings (i1)

Demonstrate knowledge of various unit dimensioning systems (l2)

Place local and general notes including fonts, lettering size, style, etc. (l6)

Identify measurements (l8)