

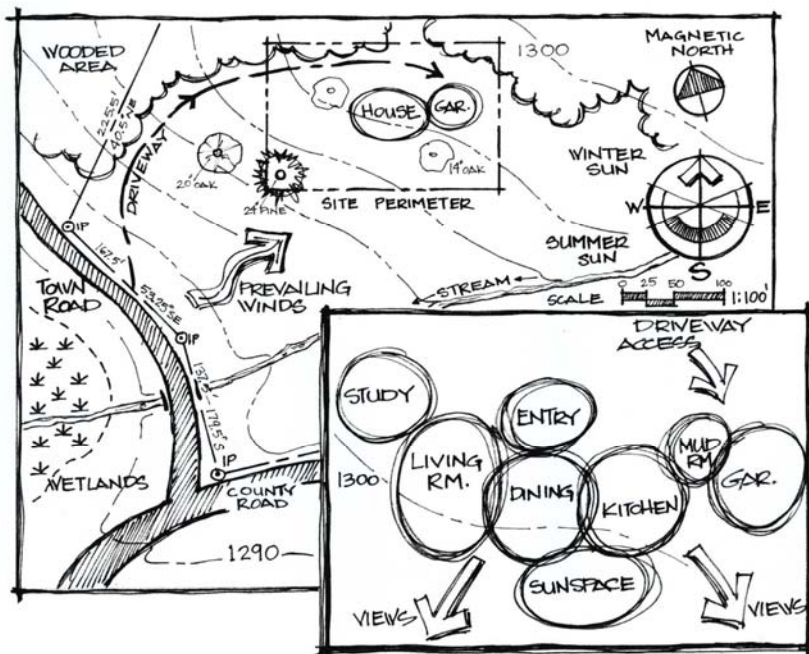
BUBBLE, BLOCK AND ROUGH FLOOR PLAN SKETCHING

At this point you should know what type of rooms/ spaces are required for your commercial space. Now it is time to start developing the floor plan. Sketch out Bubble, Block and a Rough Floor Plan for your commercial space. Do each sketch on its own A-size sheet of paper. Title, sign and date each of your sketches. These sketches will be scanned in for your portfolio to show that you are familiar with the process of design.

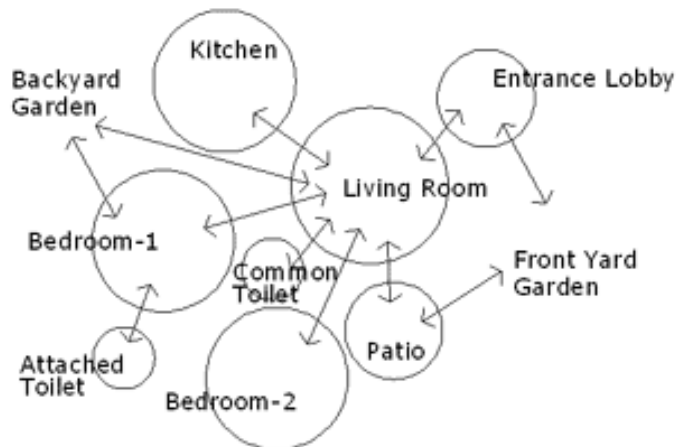
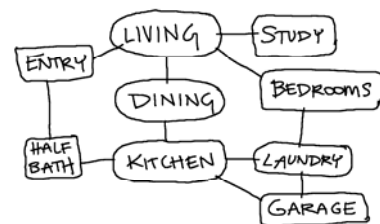
Shown below is the example from last year when you did your dream house design.

1. Bubble Diagram: Show the relationship between the rooms (spaces).

Group and link up the spaces (rooms) that you will have in your house. The bubble diagram is a good way of showing what spaces (rooms) you are going to have in your house and how they relate to each other.

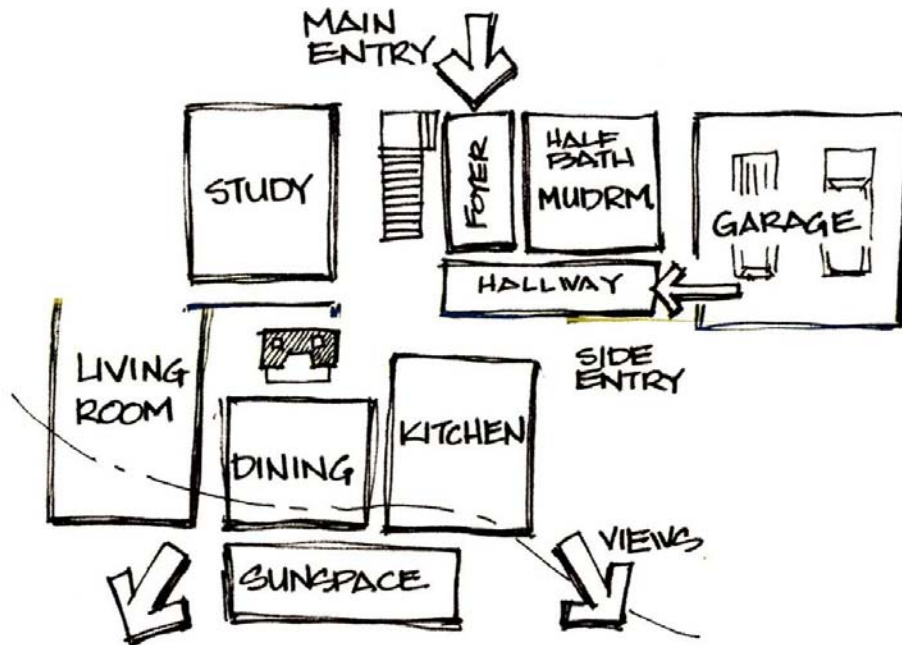


"BUBBLE DIAGRAMS"



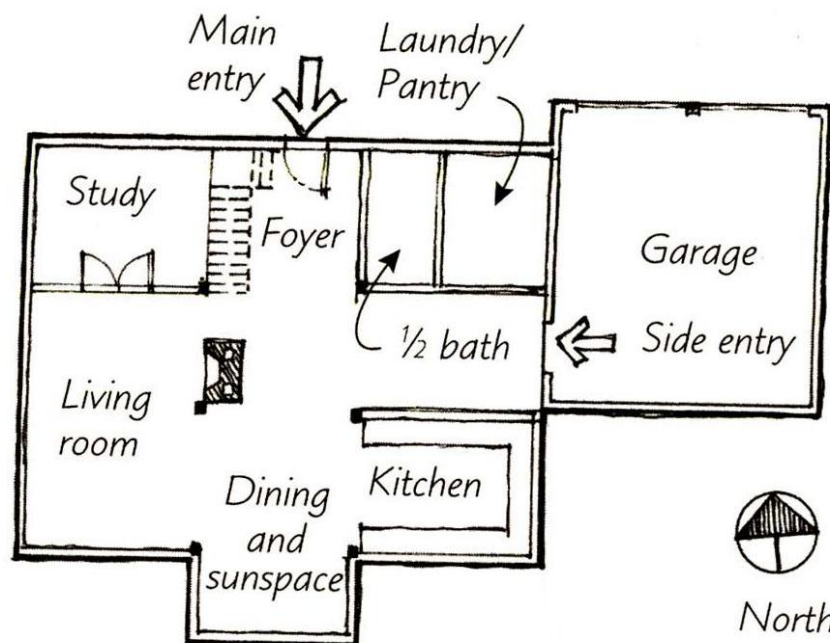
2. From the Bubble Diagram develop a Block Diagram

Below shows how to make the bubble representation of spaces and activities you connected and grouped up into a floor plan. This is a good time to think about traffic patterns in the house. For instance, you do not want to go through private areas (bedrooms) to public (kitchen) and semi-public spaces (office).



3. Draw a Rough Floor Plan Outline

Draw a basic floor plan showing exterior and interior walls. As you go on you will start to refine your floor plan further with more interior walls, windows, stairs and major fixtures.



***** As Always- Title, Sign and Date each of your sketches *****