

Adding Elevation Detail, Hatch and Notes and Creating a Door and Window Schedule

Once you get your blocked elevations approved you will now add details, notes, and hatch to your elevations as well as create a door and window schedule. Use the reference CAD file given to you.

1. Add detail to your house elevation. For example, if you have siding put trim around the windows and doors, an apron board, decorative gable vents etc. If you have brick, put brick soldier courses above the windows, stone sills, brick or stone patterns, etc. (Even though you are adding detail, don't do your windows or doors yet because sometimes it can make adding hatch difficult.
2. As discussed in class add notes to the elevation. Use the 1-4MED text size, on the NOTES or TEXT layer. Draw leader lines from the note pointing to the object using the 1-4MED dimension size, on the DIMENSION layer. Add the Roof Slope Tags as well. Refer to the example CAD file.
3. Add hatch to your elevations. Hatch should be on the HATCH layer. Hatch each elevation individually, so they are not all linked.
4. Add the detail to your windows and doors, showing the window framing and grille pattern you want. Include a window and door tag on each of the windows and doors. At this point every window can be lettered window "A" and every door "1". This will change shortly.
5. Update all your doors and window tags with the correct numbers and letters. All the exact same door type will have the same number. All of the exact same window type will have the same letter. Record this on the door and window schedule and fill out completely as explained in class. Coordinate this between your floor plans and elevations. For example, if your front door is #3 on the floor plan, make sure a 3 is shown in the tag on the elevation.

Formative Draft Check #1:

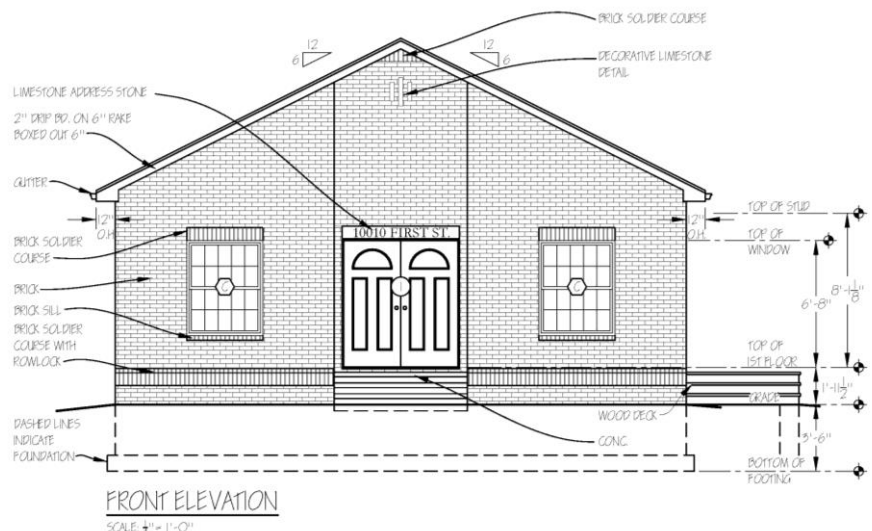
-Print **one** of your Elevations from model space on its own A-size sheet- fit to paper. Turn it in for red-marks. After you receive your red-marks and know you are on the right track, finish the other three.

Formative Draft Check #2:

- Print **each** of the four elevations from model space on its **own** A-size sheet- **fit to paper**. (4 sheets)
- Print your Floor Plan from model space on its own A-size sheet- fit to paper. (1 sheet)
- Print your Door & Window Schedule from model space on its own A-size sheet- fit to paper (1 sheet)

Summative Final Check:

-Fix red-marks on above formative prints, and re-plot. Turn back in for grade along with old formative draft checks.



Adding Elevation Detail, Hatch and Notes and Creating a Door and Window Schedule

Front Elevation	Leaders drawn correctly, all façade materials are noted correctly, door and window tags are shown and coordinate with floor plan/ schedule, material hatch is shown correctly, elevation dimensions are shown, title and scale.	4	
Right Side Elevation	Leaders drawn correctly, all façade materials are noted correctly, door and window tags are shown and coordinate with floor plan/ schedule, material hatch is shown correctly, elevation dimensions are shown, title and scale.	4	
Rear Elevation	Leaders drawn correctly, all façade materials are noted correctly, door and window tags are shown and coordinate with floor plan/ schedule, material hatch is shown correctly, elevation dimensions are shown, title and scale.	4	
Left Side Elevation	Leaders drawn correctly, all façade materials are noted correctly, door and window tags are shown and coordinate with floor plan/ schedule, material hatch is shown correctly, elevation dimensions are shown, title and scale.	4	
Door and Window Schedule/ Plan	Filled out correctly, coordinates with floor plan	2	
		20	