

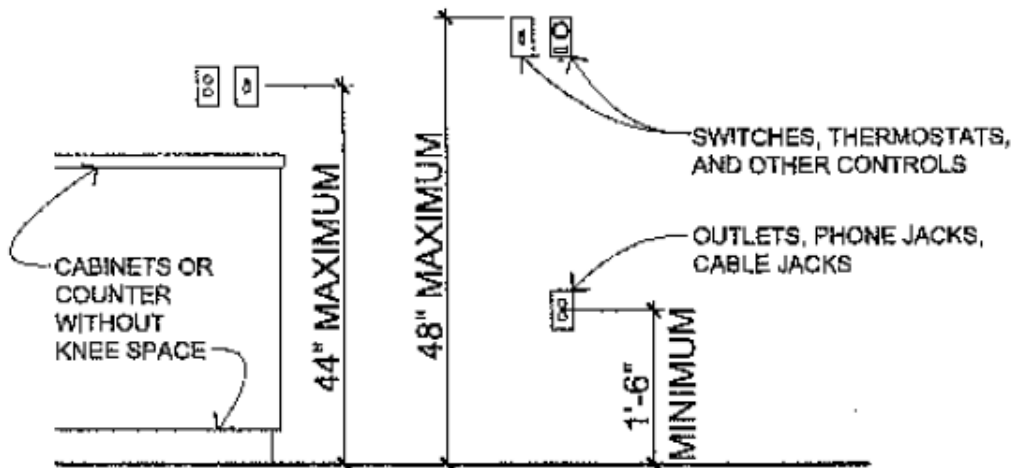
ACCESSIBILITY

Accessible is a design term that was first introduced in the 1950s to describe the elements of the physical environment that can be used by people with disabilities. Originally, the term described facilities that could be accessed by wheelchair users, but it has **evolved** to include designs for a wider group of people with more diverse functional requirements.

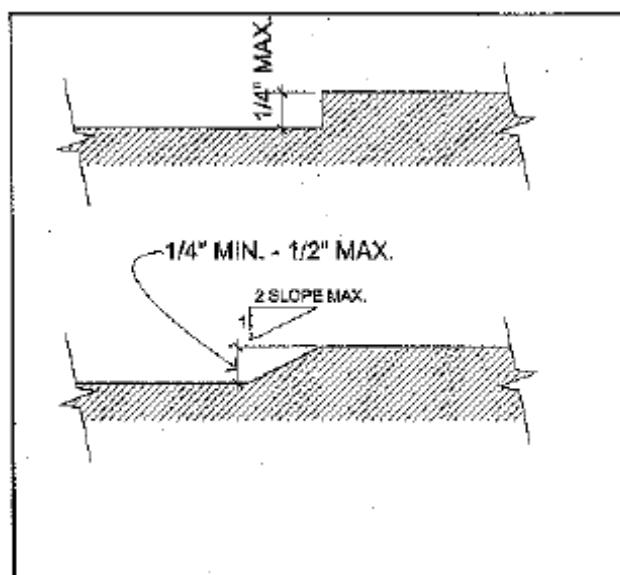
Society's need for accessible design has **increased** as a result of continuing medical advances. Concurrent with the medical advances has been the development of new building technologies, such as residential elevators, wheelchair lifts, and power door operators that have made the provision of accessible facilities more practical and less expensive. Accessible design will continue to change as medical advances and building technologies continue to evolve.

Although still an evolving field, there is already a proliferation of laws and codes governing the implementation of accessible design; therefore, **architects must educate themselves**, and stay current, in both the principals and the legal requirements of accessibility. *(source: Architectural Graphic Standards Eleventh Edition)*

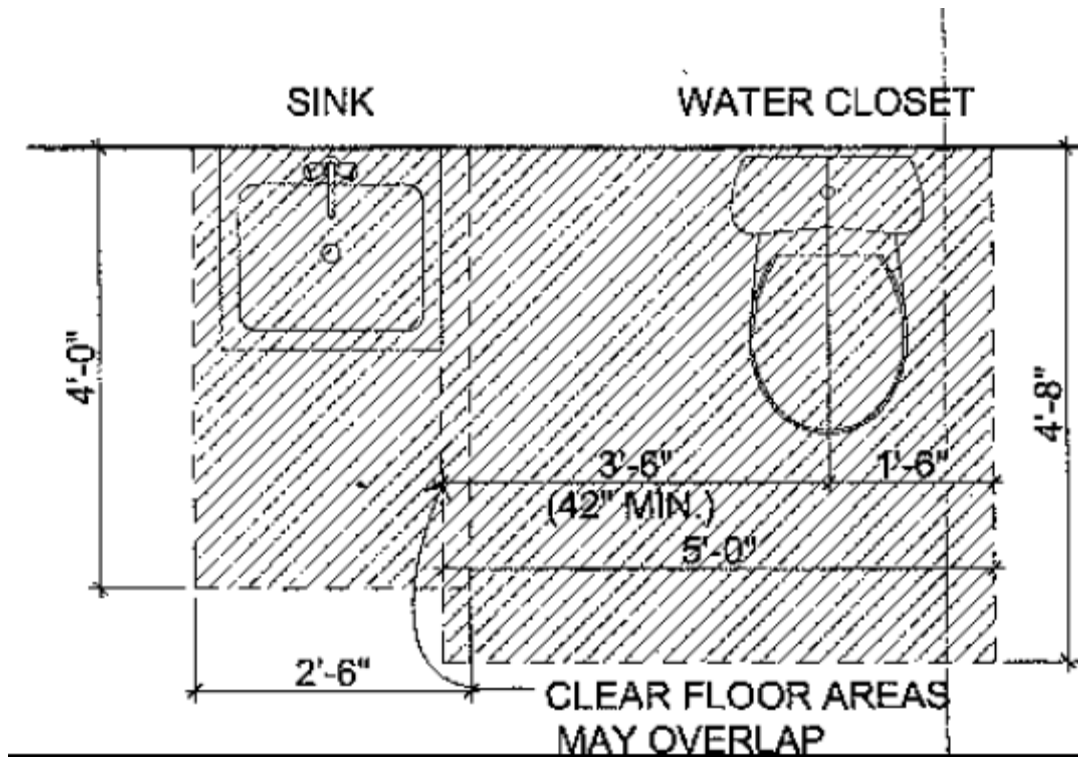
Draft the following details which will be included in your Commercial Space Construction Documents. They will be placed in your drawing at $\frac{1}{2}'' = 1'-0''$ so be sure any notes are 1-2SM, MED or LG as necessary.



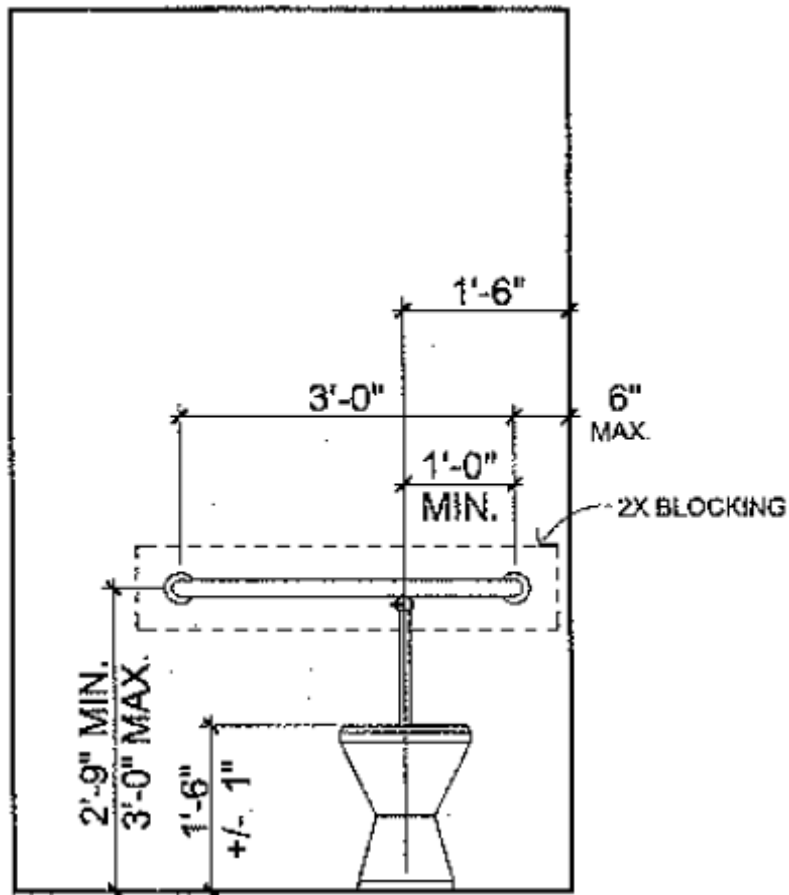
ELECTRICAL CONTROLS



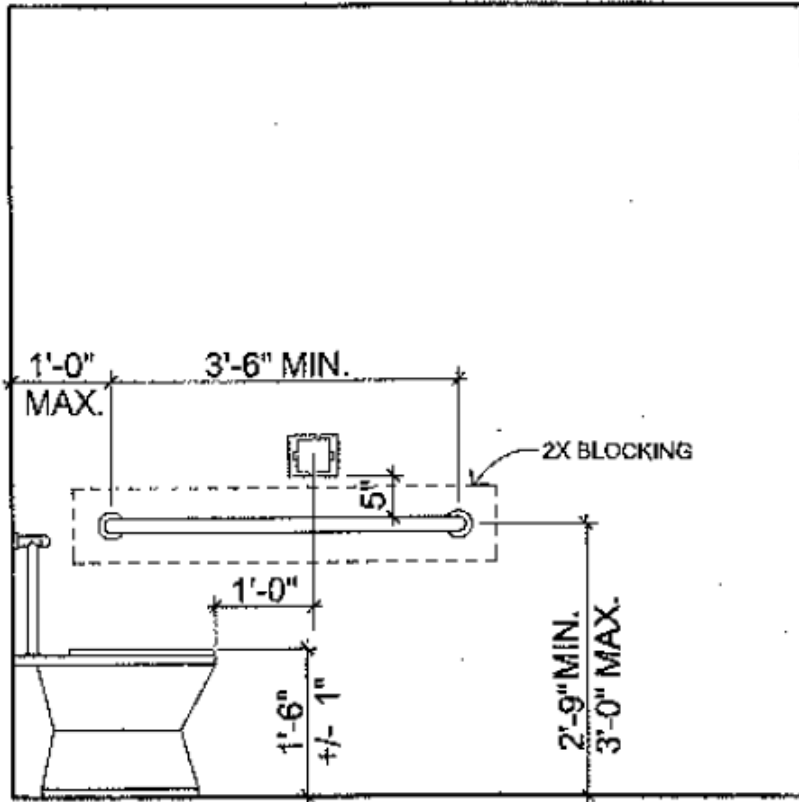
GENERAL ACCESSIBILITY AT LEVEL CHANGE



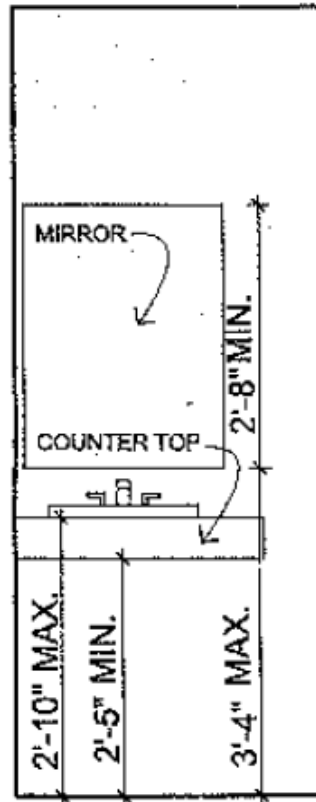
CLEAR FLOOR AREAS



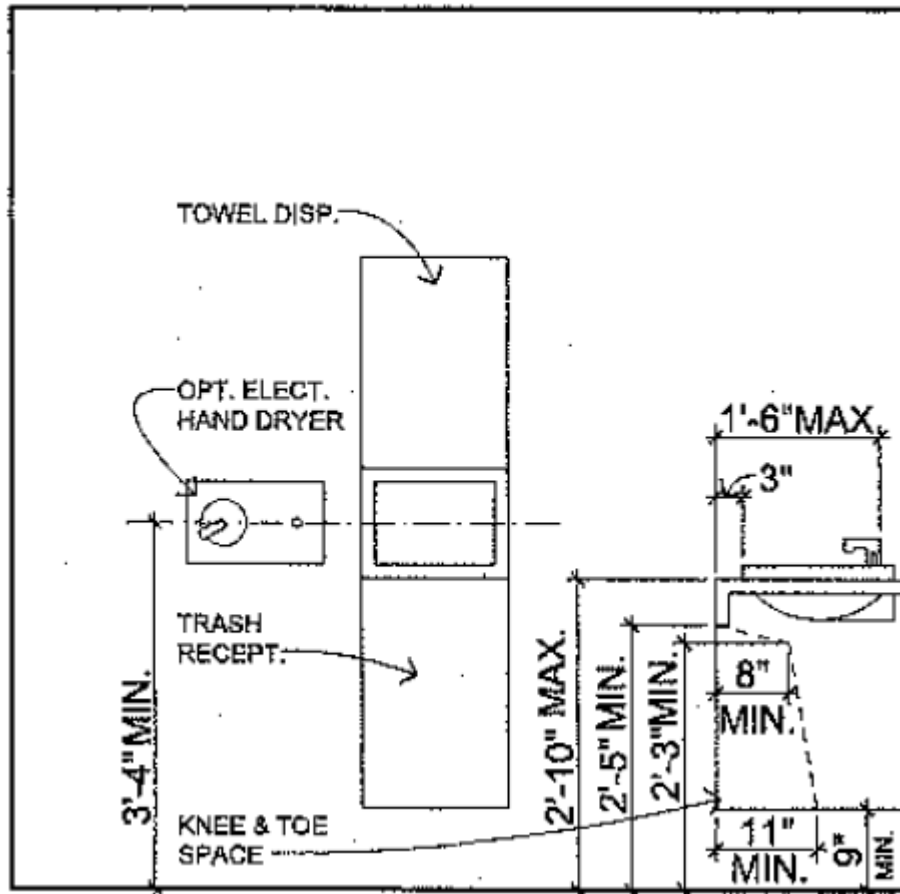
TOILET FRONT ELEV.



TOILET SIDE ELEV.



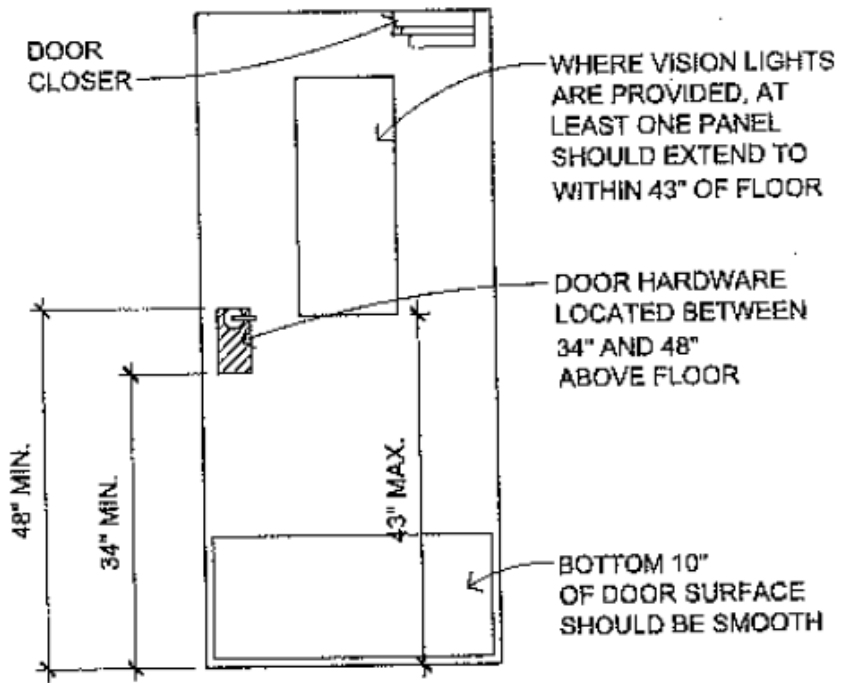
SINK FRONT ELEV.



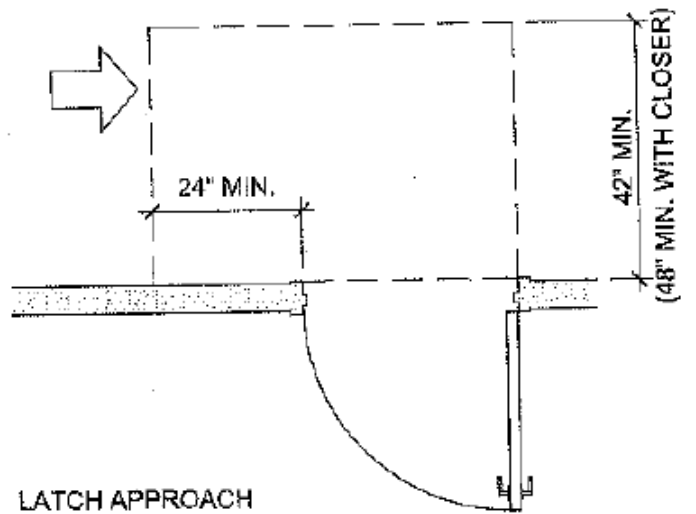
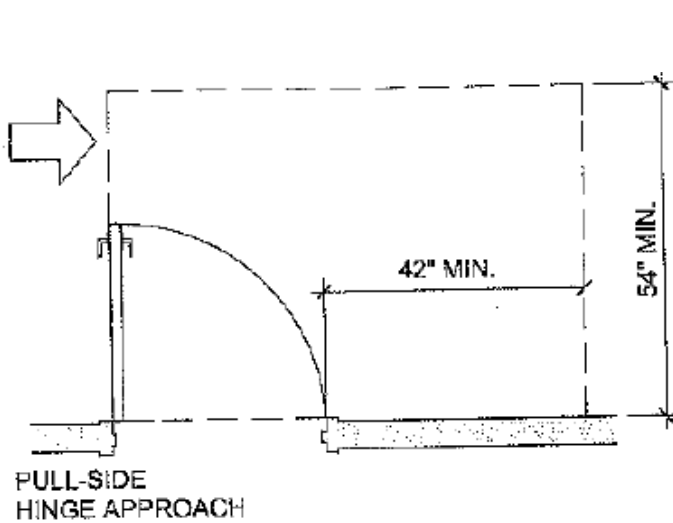
SINK SIDE ELEV./ SECTION

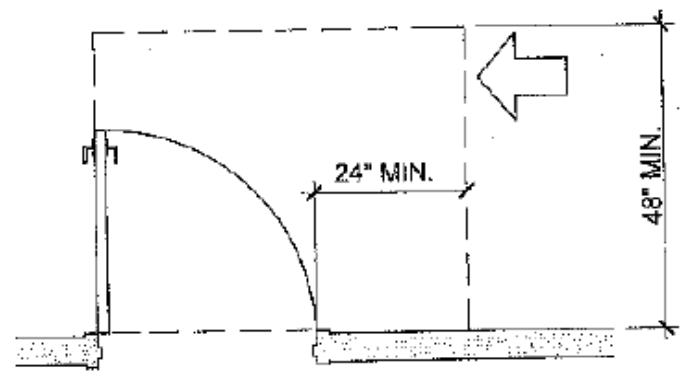
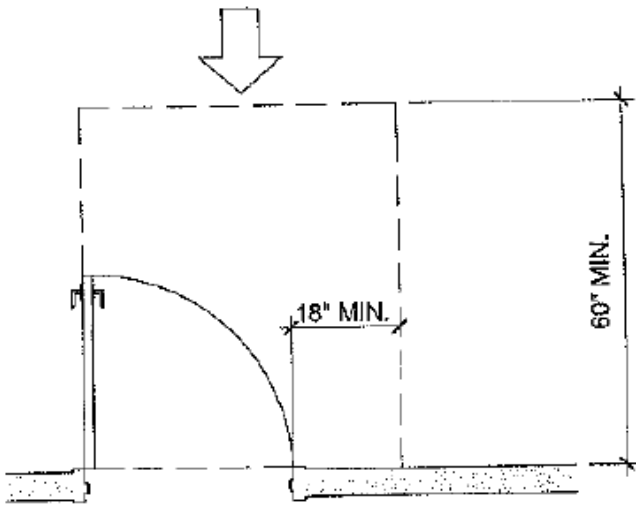
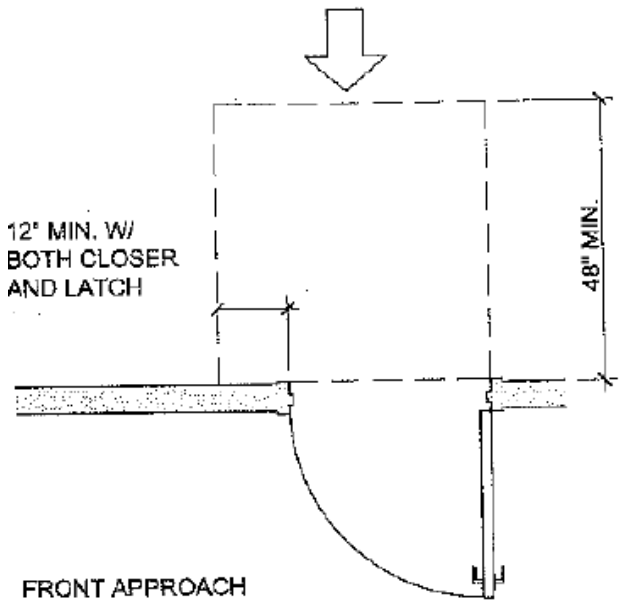
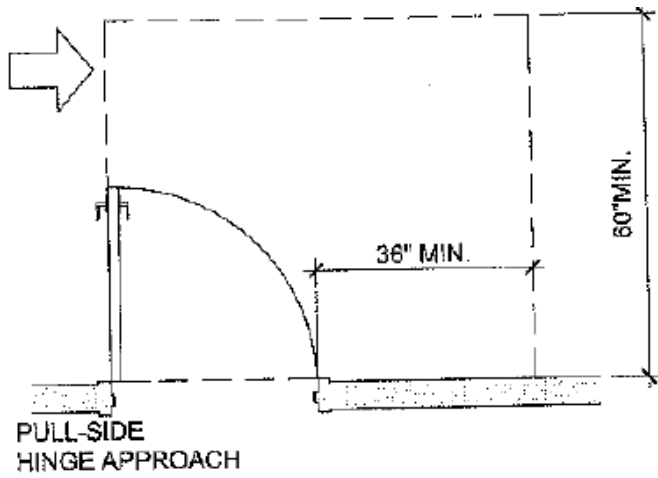
ACCESSIBILITY NOTES:

1. GRAB BAR SHALL BE MIN. 1-1/4" TO 1-1/2" DIA. MOUNTED W/ 1-1/2" BETWEEN BAR AND WALL SURFACE.
2. FAUCET CONTROLS SHALL BE EITHER LEVER TYPE W/ A MIN. 2" HANDLE LENGTH OR A METERING TYPE VALVE REQUIRING LESS THAN 5 LBS. OF PRESSURE TO OPERATE.
3. ACCESSIBLE TOILET ROOMS SHALL BE IDENTIFIED WITH A TACTILE SIGN WITH LETTER NOT LESS THAN 1-1/4" ("MEN" OR "WOMEN") MOUNTED 60" ABOVE THE FLOOR ADJACENT TO THE LATCH SIDE OF THE DOOR, AN ACCESSIBILITY SYMBOL SHALL BE MOUNTED NOT MORE THAN 96" AND NOT LESS THAN 60" ABOVE FLOOR.
4. PROVIDE WOOD BLOCKING IN ALL AREAS FOR ANCHORAGE OF GRAB BARS, AND WALL MOUNTED FIXTURES, VERIFY LOCATIONS W/ MANUFACTURER'S LITERATURE.
5. ALL DOORS AND TOILET STALL DOORS INTO ACCESSIBLE STALLS SHALL PROVIDE A MINIMUM OF 32" CLEAR WIDTH.
6. DOOR HARDWARE SHALL BE A LEVER-OPERATED MECHANISM THAT DOES NOT REQUIRE TIGHT GRASPING, PINCHING, OR TWISTING OF THE WRIST TO OPERATE. HARDWARE SHOULD BE MOUNTED NO HIGHER THAT 48" ABOVE FINISH FLOOR.



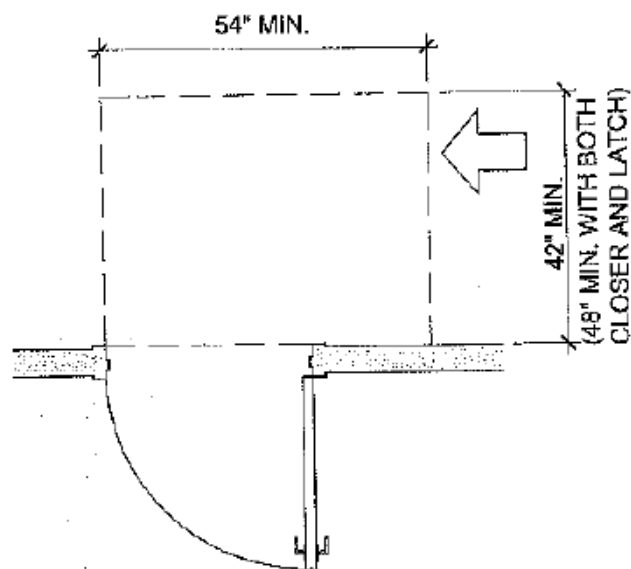
ACCESSIBLE DOOR FEATURES





FRONT APPROACH

LATCH APPROACH



MANEUVERING CLEARANCE AT DOORS