

WOOD STUDS AT 16" O.C.

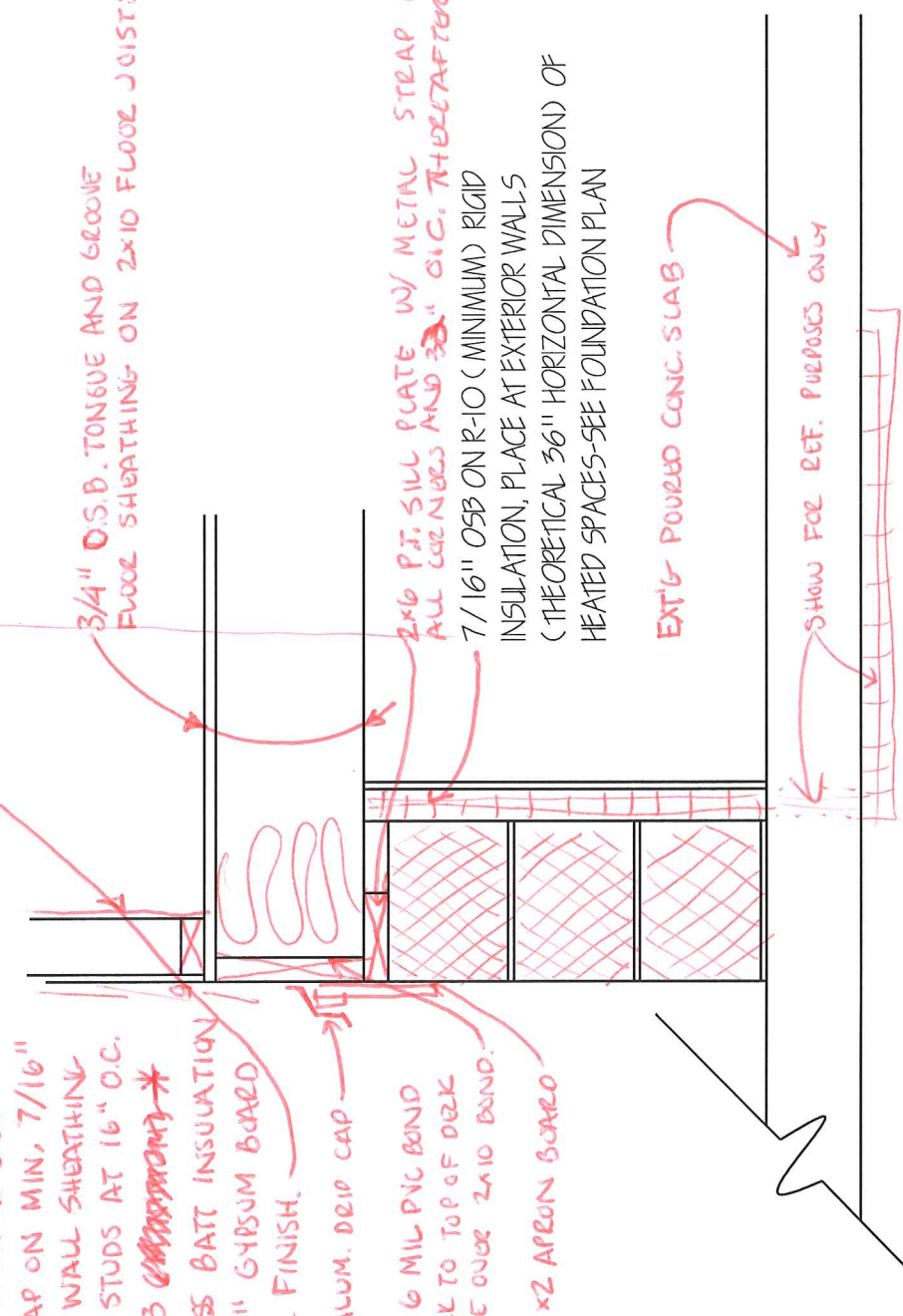
HORIZONTAL SIDING OVER
HOUSE-WRAP ON MIN. 7/16"
EXTERIOR WALL SHEATHING
ON 2x4 STUDS AT 16" O.C.
WITH 2-13 ~~MINIMUM~~ *
FIBERGLASS BATT INSULATION
WITH 1/2" GYPSUM BOARD
INTERIOR FINISH.
WOOD OR ALUM. DRIP CAP
24" WIDE 6 MIL PVC BOND
WRAP TACK TO TOP OF DECK
AND DRAPE OVER 2x10 BAND.
1x10 W/ 1x2 APRON BOARD

3/4" O.S.B. TONGUE AND GROOVE
FLOOR SHEATHING ON 2x10 FLOOR JOISTS @ 16" O.C.

2x6 P.T. SILL PLATE W/ METAL STRAP ANCHORS 12" FROM
ALL CORNERS AND 32" O.C. THEREAFTER
7/16" OSB ON R-10 (MINIMUM) RIGID
INSULATION, PLACE AT EXTERIOR WALLS
(THEORETICAL 36" HORIZONTAL DIMENSION) OF
HEATED SPACES-SEE FOUNDATION PLAN

EXT'G POURED CONC. SLAB

SHOW FOR REF. PURPOSES ONLY



TITLE OF VIEW

SCALE: 1" = 1'-0"

* IN OUR CLIMATE ZONE 5A, WOOD FRAME
WALL R-VALUE IS 20 OR 13+5.

FIRST VALUE ...