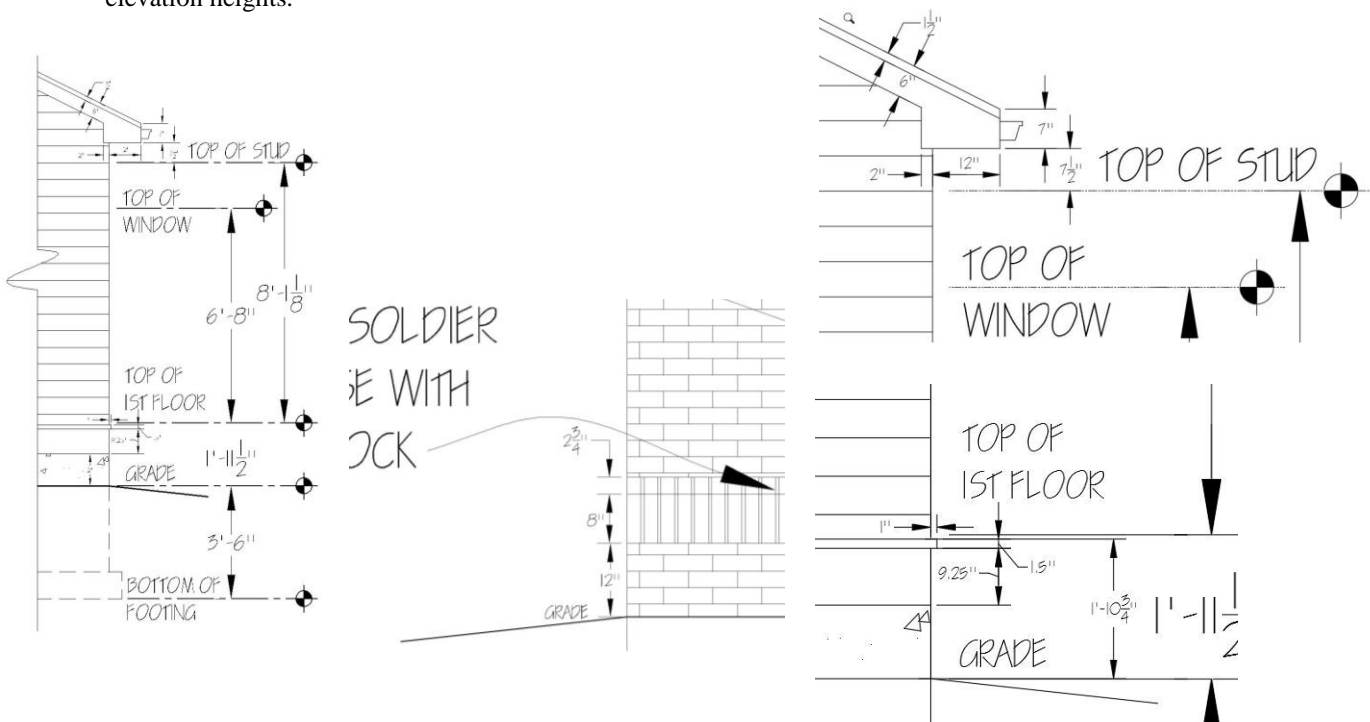


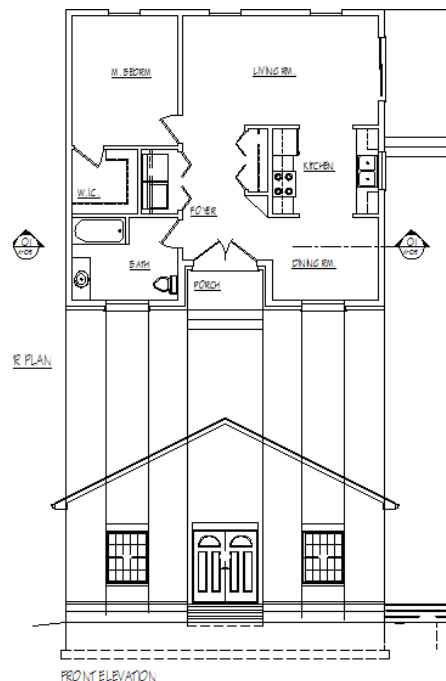
Guest House- Part 4 Blocked Elevations Project

You will now draw 4 block elevations for the Guest House. You will draw the Front, Right, Rear and Left Side Elevations. Reference the 4 block elevations given to you in this pack. To draw the elevations, do the following.

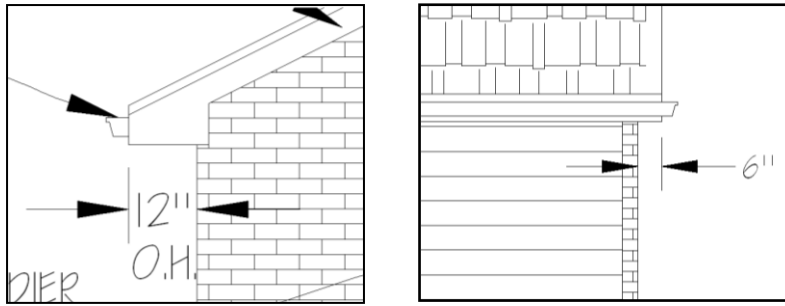
1. Download the blocked elevations CAD file. Copy what is in that file and paste it into your SOCOOL Guest House drawing.
2. With the teacher, review how the Front Elevation started for you aligns with the floor plan and the elevation heights.
3. Shown in the first picture below is a partial elevation stating the key heights of an elevation. The second, third, and fourth are close up views of the overhang and belt line of the house respectively. You will want to use these dimensions to set up your elevation heights.



4. To locate items you will transfer lines down from your floor plan. This is how you will locate doors, windows, and jogs in the exterior walls. Look at the picture below to see this.

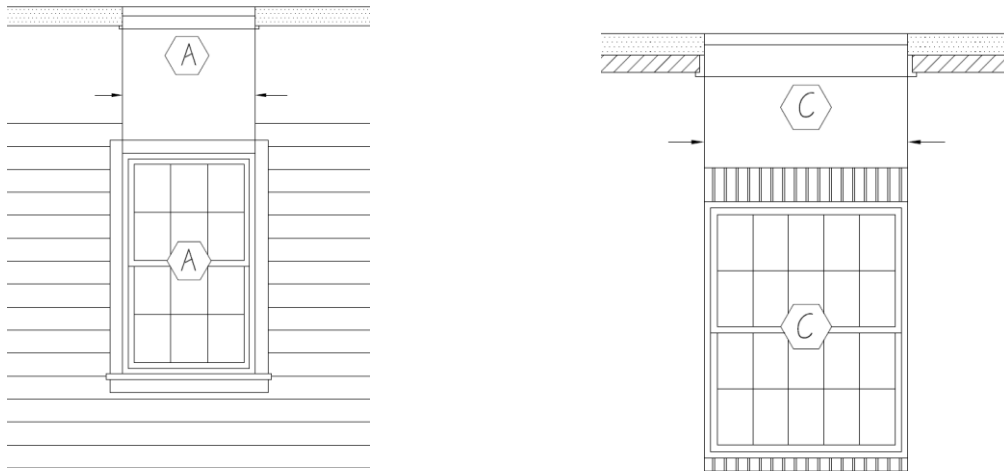


5. Some items you want to keep in mind when drawing.

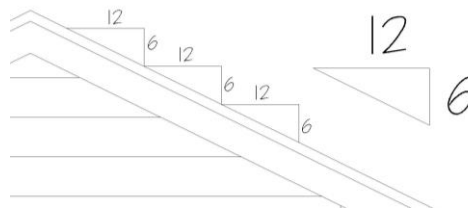


Overhang conditions at fronts and sides of peaks

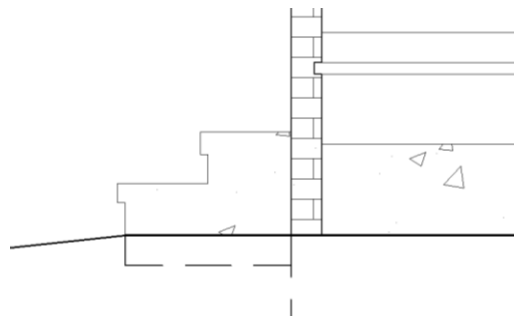
6. To place windows, drag lines down from the window opening shown within the stud wall. *Be aware if you are drawing a window in a brick wall you don't accidentally draw lines down from the brick mold.* Align the top of the window with the "TOP OF WINDOW" line. After you place the windows, siding windows will be shown with 3.5" trim around them, and brick with a brick soldier course and brick sill. See the library for reference.

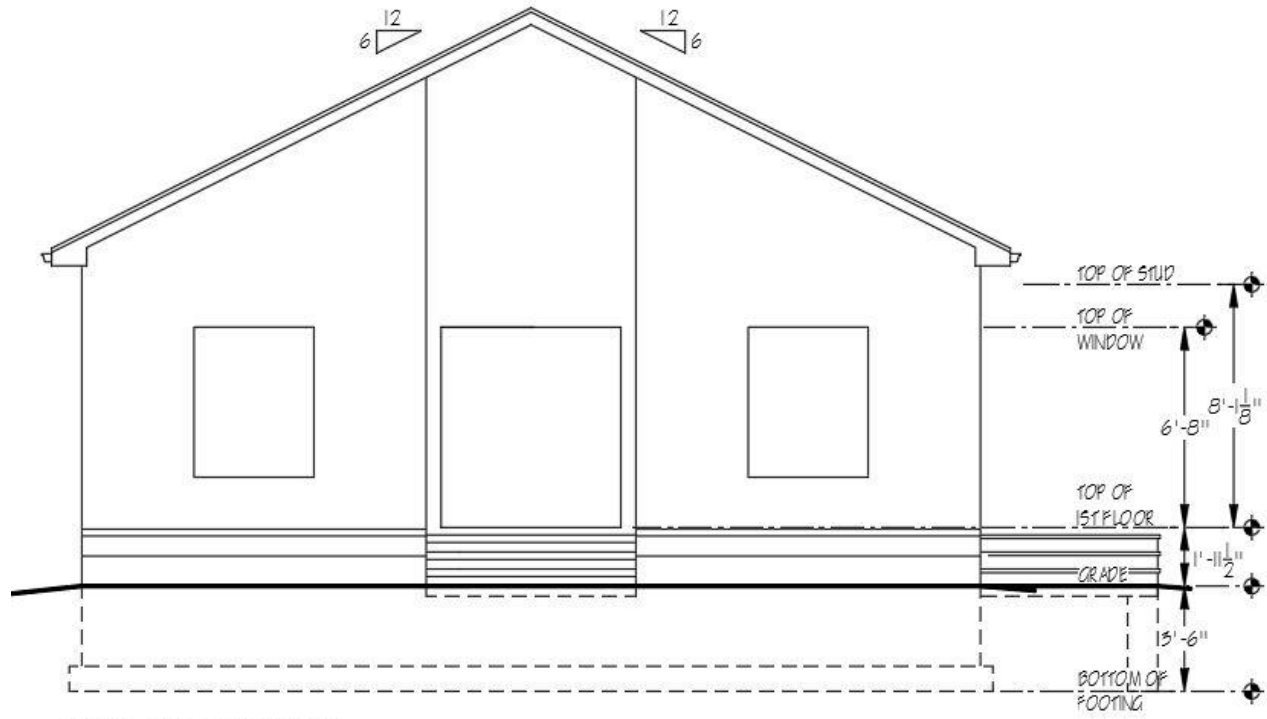


7. When drawing the slope you can measure horizontally 12", then vertically 6", for a 6/12 slope. Draw your roof angle by connecting the two points, then use the EXTEND command to extend the slope line.

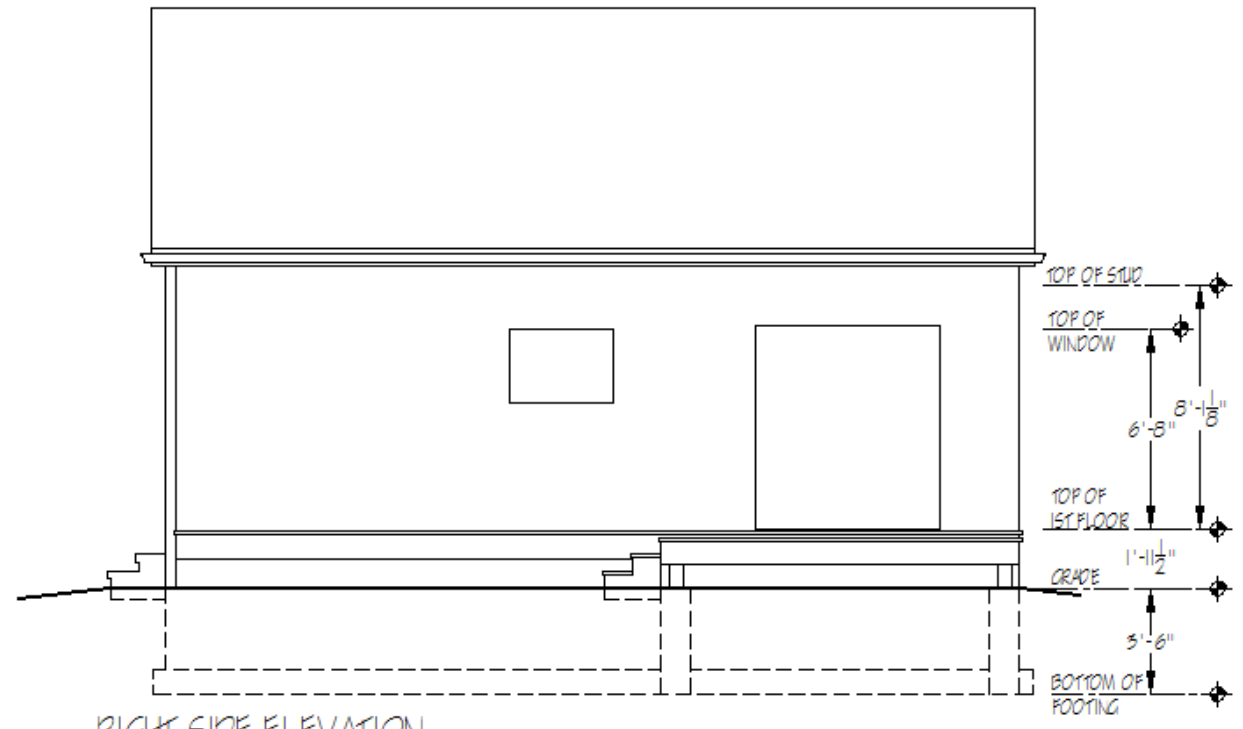


8. When you draw items such as stairs give them a 1" nosing, which overhangs the dimension you show on your floor plan.

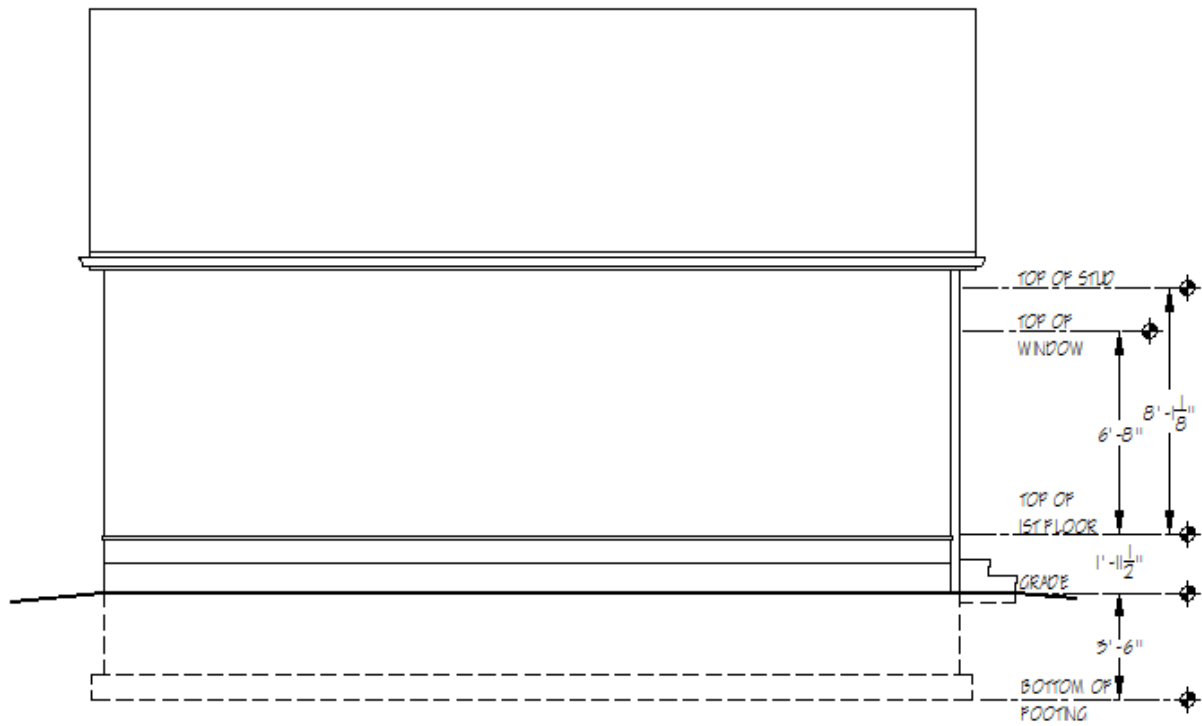




FRONT ELEVATION
 SCALE: 1/4" = 1'-0"

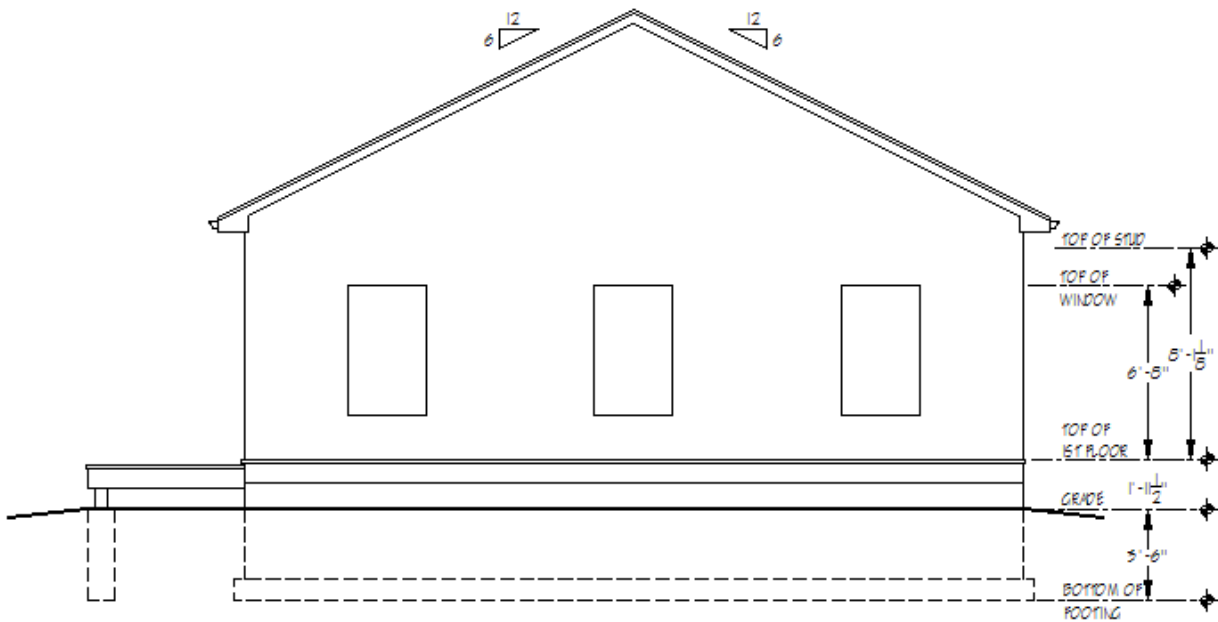


RIGHT SIDE ELEVATION
 SCALE: 1/4" = 1'-0"



LEFT SIDE ELEVATION

SCALE: $\frac{1}{4}" = 1'-0"$



REAR ELEVATION

SCALE: $\frac{1}{4}" = 1'-0"$