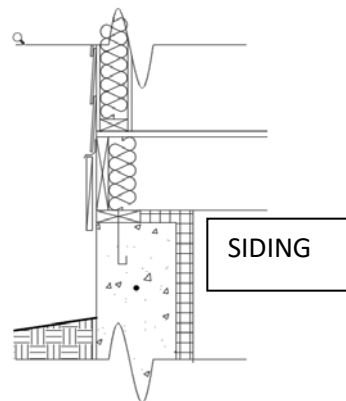
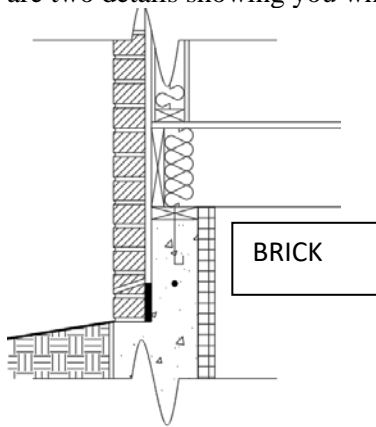


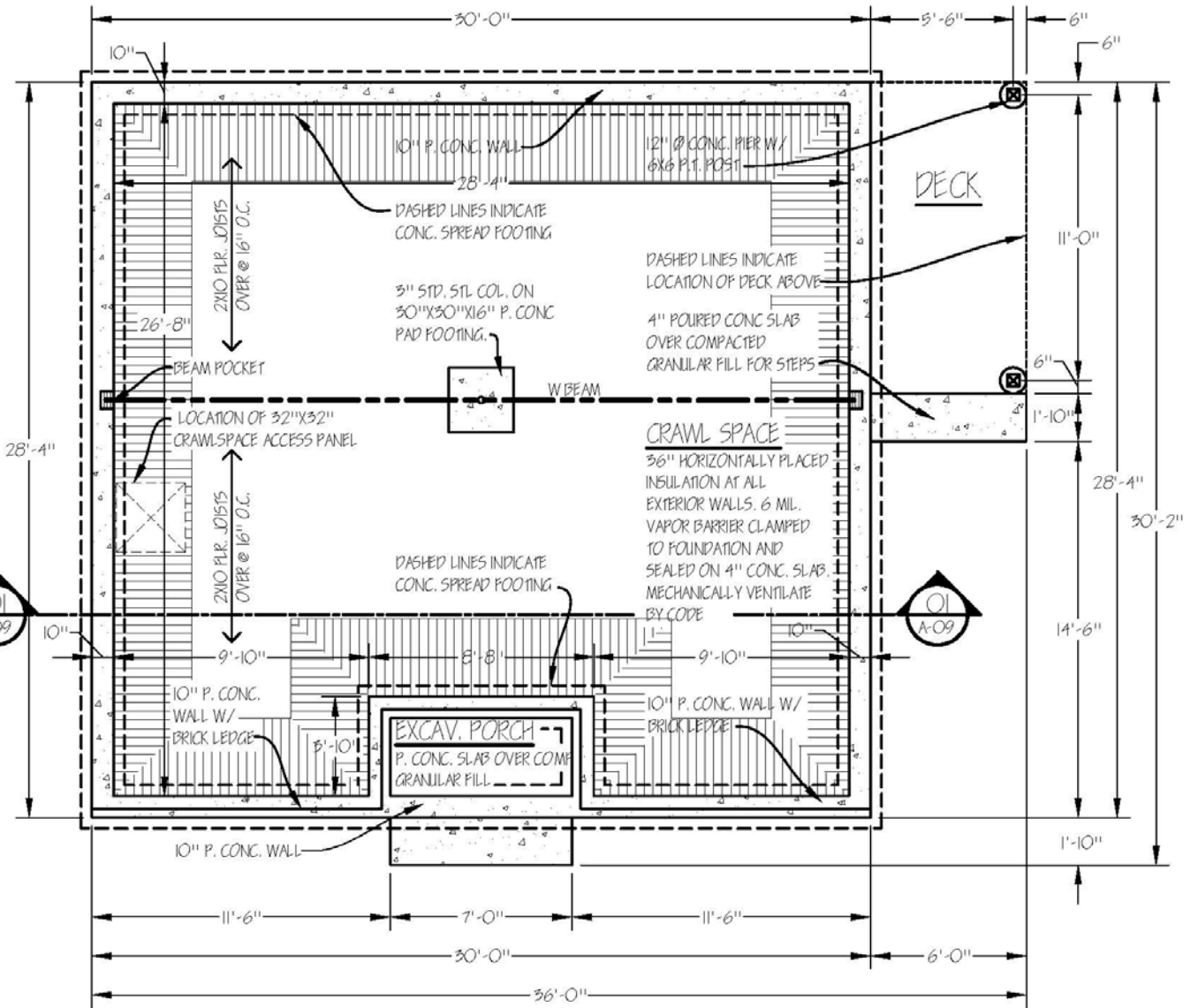
## Guest House- Part 3 Project

You will now draw the Foundation Plan for the Guest House. Reference the back of this sheet to the Foundation Plan Example. The Guest House will be on a crawlspace foundation. To draw the foundation plan do the following.

1. Make a copy of the floor plan and put it off to the side of your drawing. On the **Foundation Layer**, outline the outside of the exterior wall on the copied floor plan. This is the building footprint. Turn off all your layers except for the **Foundation Layer** and you will be left with an outline. Move this outline to the side and then turn all your layers back on. You can erase your extra copy of the floor plan.
2. At the front porch location, outline the location of where the stairs would be. This will be a 4" concrete pad to support your steps.
3. At the location of the deck, outline the deck shape with a hidden line. Show a 4" thick concrete pad at the stair location and 12" diameter concrete piers with 6x6 posts (5.5"x5.5") at the outer corner of the deck.
4. Offset the building footprint line **in** 10", for a 10" thick poured concrete foundation wall. Also show a 10" poured concrete wall where the front edge of your porch is. This area under the porch is similar to the rest of your crawlspace walls but it isn't dug out like a crawlspace area, just filled back in with dirt and stones.
5. At the front of the house where the brick is shown, show a line offset 4" in from the outside for a 4" brick ledge. Below are two details showing you why you need to show a brick ledge at a brick wall.



6. Offset a line 3'-0" to the inside along perimeter of the foundation. This will represent rigid insulation which will be under the concrete pad of the crawl space. Put it on the HATCH layer and select a pattern that matches the example.
7. Offset from either side of the foundation wall, 5" in each direction to represent the foundation footing. The footing line should be shown as dashed so change it to a hidden line-type and change the color to yellow. Be sure that the footing hidden line is a bigger dash size than the deck hidden line, so people reading the drawing can easily differentiate between the two.
8. Place the 30"x30"x16" Concrete Pad Footing in the center of your foundation plan. Place a 3" diameter circle in the middle to represent your steel column. Show a W- Beam by drawing a line on the STRUCTURAL layer and making it a Phantom Line Type. The beam pocket which holds the W-Beam in the wall is 6" deep x 8" wide.
9. Dimension the foundation plan. Just as with the floor plan, hold the first dimension string 2'-0" from the wall, then space each one after that 1'-6".
10. Add the notes to the Foundation Plan as shown in the example. Notes are to be on the NOTES layer and at 1-4 MED. Align your notes as much as possible and place and draw leader lines properly. The leader lines should be drawn at 1-4MED, on the NOTES layer.
11. Add the concrete hatch in the correct locations. You can match your hatch with the pattern given to you in the library. Be sure you draw your hatch on the HATCH layer.
12. Add the title and scale to the drawing, FOUNDATION PLAN (Title Layer, 1-4TITLE) and Scale: 1/4"=1'-0" (Notes Layer, 1-4 Med)



**FOUNDATION PLAN**

SCALE: 1/4" = 1'-0"